

Datasheet for ABIN634970 **anti-CDS1 antibody**



[Go to Product page](#)

1 Image

Overview

Quantity:	100 µL
Target:	CDS1
Reactivity:	Human, Mouse, Rat
Host:	Rabbit
Clonality:	Polyclonal
Conjugate:	This CDS1 antibody is un-conjugated
Application:	Western Blotting (WB)

Product Details

Immunogen:	CDS1 antibody was raised using a synthetic peptide corresponding to a region with amino acids VVFGFIAAYVLSKYQYFVCPVEYRSDVNSFVTECEPSELFQLQTYSLPPF
Purification:	Affinity purified

Target Details

Target:	CDS1
Alternative Name:	CDS1 (CDS1 Products)
Background:	Breakdown products of phosphoinositides are ubiquitous second messengers that function downstream of many G protein-coupled receptors and tyrosine kinases regulating cell growth, calcium metabolism, and protein kinase C activity. CDS1 is an enzyme which regulates the amount of phosphatidylinositol available for signaling by catalyzing the conversion of phosphatidic acid to CDP-diacylglycerol. This enzyme is an integral membrane protein localized

Target Details

to two subcellular domains, the matrix side of the inner mitochondrial membrane where it is thought to be involved in the synthesis of phosphatidylglycerol and cardiolipin and the cytoplasmic side of the endoplasmic reticulum where it functions in phosphatidylinositol biosynthesis.

Molecular Weight: 53 kDa (MW of target protein)

Pathways: [Inositol Metabolic Process](#)

Application Details

Application Notes: WB: 1 µg/mL
Optimal conditions should be determined by the investigator.

Comment: CDS1 Blocking Peptide, catalog no. 33R-9876, is also available for use as a blocking control in assays to test for specificity of this CDS1 antibody

Restrictions: For Research Use only

Handling

Format: Lyophilized

Reconstitution: Lyophilized powder. Add distilled water for a 1 mg/mL concentration of CDS1 antibody in PBS

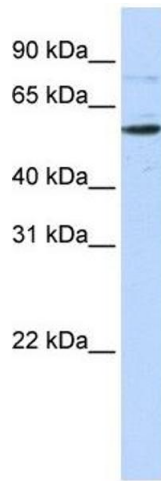
Concentration: Lot specific

Buffer: PBS

Handling Advice: Avoid repeated freeze/thaw cycles.

Storage: 4 °C/-20 °C

Storage Comment: Store at 2-8 °C for short periods. For longer periods of storage, store at -20 °C.



Western Blotting

Image 1. CDS1 antibody used at 1 ug/ml to detect target protein.