

Datasheet for ABIN634971
anti-PARL antibody (N-Term)



[Go to Product page](#)

3 Images

Overview

Quantity:	100 µL
Target:	PARL
Binding Specificity:	N-Term
Reactivity:	Human, Mouse, Rat, Dog
Host:	Rabbit
Clonality:	Polyclonal
Conjugate:	This PARL antibody is un-conjugated
Application:	Western Blotting (WB), Immunohistochemistry (IHC)

Product Details

Immunogen:	PARL antibody was raised using the N terminal of PARL corresponding to a region with amino acids SLIKPLFFTVGFTGCAFGSAAIWQYESLKSRVQSYFDGIKADWLDSIRPQ
Specificity:	PARL antibody was raised against the N terminal of PARL
Purification:	Affinity purified

Target Details

Target:	PARL
Alternative Name:	PARL (PARL Products)
Background:	PARL is a mitochondrial integral membrane protein. Following proteolytic processing of this protein, a small peptide (P-beta) is formed and translocated to the nucleus. PARL may be involved in signal transduction via regulated intramembrane proteolysis of membrane-tethered

Target Details

precursor proteins. Variation in its gene has been associated with increased risk for type 2 diabetes.

Molecular Weight: 36 kDa (MW of target protein)

Pathways: [Autophagy](#)

Application Details

Application Notes: WB: 0.5 µg/mL, IHC: 4-8 µg/mL
Optimal conditions should be determined by the investigator.

Comment: PARL Blocking Peptide, catalog no. 33R-8594, is also available for use as a blocking control in assays to test for specificity of this PARL antibody

Restrictions: For Research Use only

Handling

Format: Lyophilized

Reconstitution: Lyophilized powder. Add distilled water for a 1 mg/mL concentration of PARL antibody in PBS

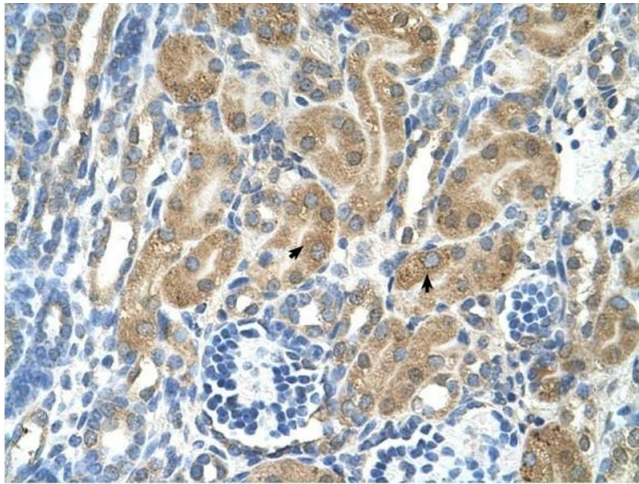
Concentration: Lot specific

Buffer: PBS

Handling Advice: Avoid repeated freeze/thaw cycles.
Dilute only prior to immediate use.

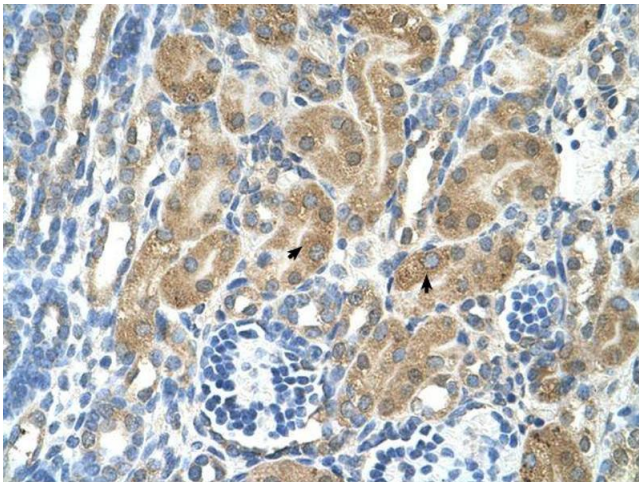
Storage: 4 °C/-20 °C

Storage Comment: Store at 2-8 °C for short periods. For longer periods of storage, store at -20 °C.



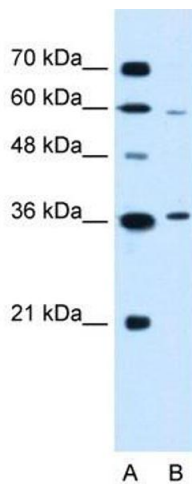
Immunohistochemistry

Image 1. PARL antibody was used for immunohistochemistry at a concentration of 4-8 ug/ml to stain Epithelial cells of renal tubule (arrows) in Human Kidney. Magnification is at 400X



Immunohistochemistry

Image 2. PARL antibody was used for immunohistochemistry at a concentration of 4-8 ug/ml. Magnification is at 400X



Western Blotting

Image 3. PARL antibody used at 0.5 ug/ml to detect target protein.