

Datasheet for ABIN634979
anti-SEMA3D antibody (Middle Region)



[Go to Product page](#)

1 Image

Overview

Quantity:	100 µL
Target:	SEMA3D
Binding Specificity:	Middle Region
Reactivity:	Human
Host:	Rabbit
Clonality:	Polyclonal
Conjugate:	This SEMA3D antibody is un-conjugated
Application:	Western Blotting (WB)

Product Details

Immunogen:	SEMA3 D antibody was raised using the middle region of SEMA3 corresponding to a region with amino acids LECIPKSQQATIKWYIQRSGDEHREELKPDERIIKTEYGLLIRSLQKKDS
Specificity:	SEMA3 D antibody was raised against the middle region of SEMA3
Purification:	Affinity purified

Target Details

Target:	SEMA3D
Alternative Name:	SEMA3D (SEMA3D Products)
Background:	SEMA3D induces the collapse and paralysis of neuronal growth cones. SEMA3D could potentially act as repulsive cues toward specific neuronal populations.

Target Details

Molecular Weight: 90 kDa (MW of target protein)

Pathways: [Regulation of Cell Size](#)

Application Details

Application Notes: WB: 1 µg/mL

Optimal conditions should be determined by the investigator.

Comment: SEMA3D Blocking Peptide, catalog no. 33R-4883, is also available for use as a blocking control in assays to test for specificity of this SEMA3D antibody

Restrictions: For Research Use only

Handling

Format: Lyophilized

Reconstitution: Lyophilized powder. Add distilled water for a 1 mg/mL concentration of SEMA0 antibody in PBS

Concentration: Lot specific

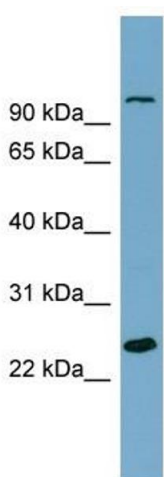
Buffer: PBS

Handling Advice: Avoid repeated freeze/thaw cycles.
Dilute only prior to immediate use.

Storage: 4 °C/-20 °C

Storage Comment: Store at 2-8 °C for short periods. For longer periods of storage, store at -20 °C.

Images



Western Blotting

Image 1. SEMA3D antibody used at 1 µg/ml to detect target protein.