

Datasheet for ABIN634985
anti-SPPL2B antibody (N-Term)



[Go to Product page](#)

3 Images

Overview

Quantity:	100 µL
Target:	SPPL2B
Binding Specificity:	N-Term
Reactivity:	Human
Host:	Rabbit
Clonality:	Polyclonal
Conjugate:	This SPPL2B antibody is un-conjugated
Application:	Western Blotting (WB), Immunohistochemistry (IHC)

Product Details

Immunogen:	SPPL2 B antibody was raised using the N terminal of SPPL2 corresponding to a region with amino acids VARGNCTFYEKVRLAQGSGARGLLIVSRERLVPPGGNKTYDEIGIPVAL
Specificity:	SPPL2 B antibody was raised against the N terminal of SPPL2
Purification:	Affinity purified

Target Details

Target:	SPPL2B
Alternative Name:	SPPL2B (SPPL2B Products)
Background:	SPPL2B is a member of the GXGD family of aspartic proteases. The GXGD proteases are transmembrane proteins with two conserved catalytic motifs localized within the membrane-spanning regions. This enzyme localizes to endosomes, lysosomes, and the plasma

Target Details

membrane. It cleaves the transmembrane domain of tumor necrosis factor alpha to release the intracellular domain, which triggers cytokine expression in the innate and adaptive immunity pathways.

Molecular Weight: 56 kDa (MW of target protein)

Application Details

Application Notes: WB: 1 µg/mL, IHC: 4-8 µg/mL
Optimal conditions should be determined by the investigator.

Comment: SPPL2B Blocking Peptide, catalog no. 33R-9434, is also available for use as a blocking control in assays to test for specificity of this SPPL2B antibody

Restrictions: For Research Use only

Handling

Format: Lyophilized

Reconstitution: Lyophilized powder. Add distilled water for a 1 mg/mL concentration of SPPL0 antibody in PBS

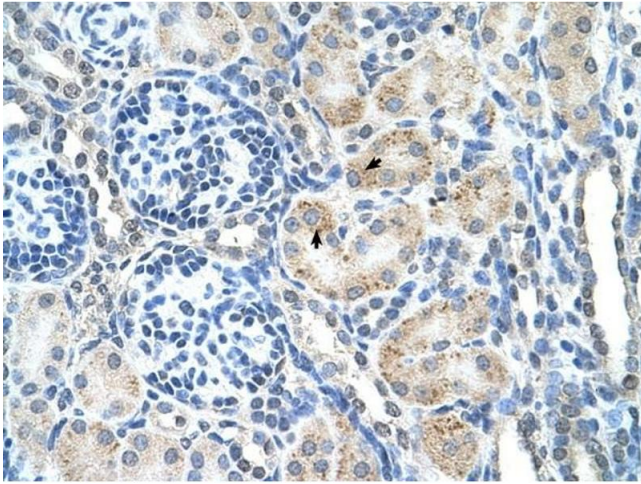
Concentration: Lot specific

Buffer: PBS

Handling Advice: Avoid repeated freeze/thaw cycles.
Dilute only prior to immediate use.

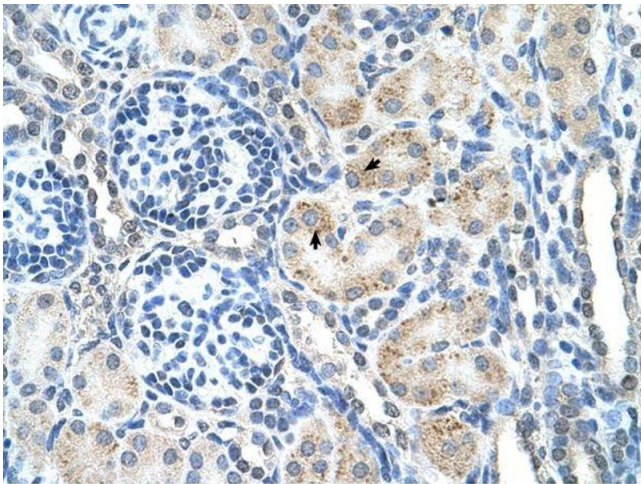
Storage: 4 °C/-20 °C

Storage Comment: Store at 2-8 °C for short periods. For longer periods of storage, store at -20 °C.



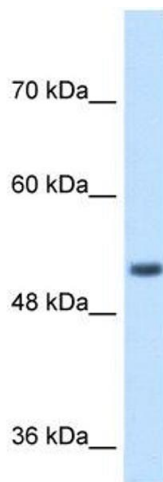
Immunohistochemistry

Image 1. SPPL2B antibody was used for immunohistochemistry at a concentration of 4-8 ug/ml to stain Epithelial cells of renal tubule (arrows) in Human Kidney. Magnification is at 400X



Immunohistochemistry

Image 2. SPPL2B antibody was used for immunohistochemistry at a concentration of 4-8 ug/ml. Magnification is at 400X



Western Blotting

Image 3. SPPL2B antibody used at 1 ug/ml to detect target protein.