

Datasheet for ABIN634990  
**anti-ALG11 antibody (C-Term)**



[Go to Product page](#)

2 Images

## Overview

Quantity:	100 µL
Target:	ALG11
Binding Specificity:	C-Term
Reactivity:	Human, Mouse, Rat
Host:	Rabbit
Clonality:	Polyclonal
Conjugate:	This ALG11 antibody is un-conjugated
Application:	Western Blotting (WB), Immunohistochemistry (IHC)

## Product Details

Immunogen:	ALG11 antibody was raised using the C terminal of ALG11 corresponding to a region with amino acids LHTMWNEHFGIGVVECMAAGTII LAHNSGGPKLDIVIPHEGDITGFLAES
Specificity:	ALG11 antibody was raised against the C terminal of ALG11
Purification:	Affinity purified

## Target Details

Target:	ALG11
Alternative Name:	ALG11 ( <a href="#">ALG11 Products</a> )
Background:	ALG11 is a GDP-Man:Man3GlcNAc2-PP-dolichol-alpha1,2-mannosyltransferase which is localized to the cytosolic side of the endoplasmic reticulum (ER) and catalyzes the transfer of the fourth and fifth mannose residue from GDP-mannose (GDP-Man) to Man3GlcNAc2-PP-

## Target Details

---

dolichol and Man4GlcNAc2-PP-dolichol resulting in the production of Man5GlcNAc2-PP-dolichol. Mutations in this gene are associated with congenital disorder of glycosylation type I<sub>p</sub> (CDGIP).

Molecular Weight: 56 kDa (MW of target protein)

Pathways: [SARS-CoV-2 Protein Interactome](#)

## Application Details

---

Application Notes: WB: 1 µg/mL, IHC: 4-8 µg/mL  
Optimal conditions should be determined by the investigator.

Comment: ALG11 Blocking Peptide, catalog no. 33R-5030, is also available for use as a blocking control in assays to test for specificity of this ALG11 antibody

Restrictions: For Research Use only

## Handling

---

Format: Lyophilized

Reconstitution: Lyophilized powder. Add distilled water for a 1 mg/mL concentration of ALG11 antibody in PBS

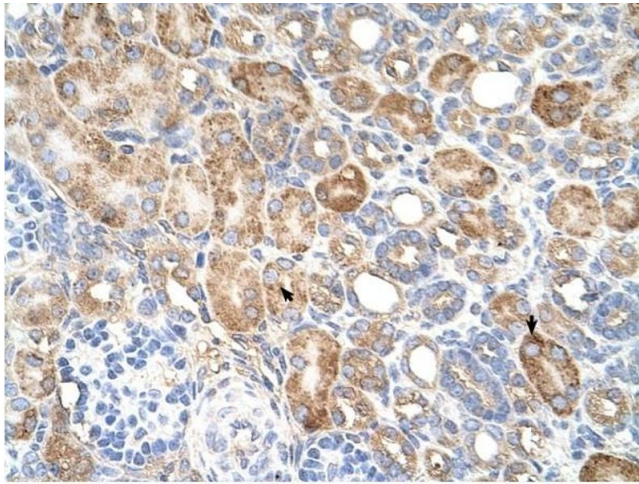
Concentration: Lot specific

Buffer: PBS

Handling Advice: Avoid repeated freeze/thaw cycles.  
Dilute only prior to immediate use.

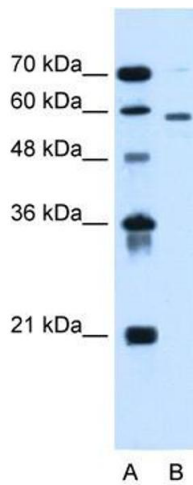
Storage: 4 °C/-20 °C

Storage Comment: Store at 2-8 °C for short periods. For longer periods of storage, store at -20 °C.



### Immunohistochemistry

**Image 1.** ALG11 antibody was used for immunohistochemistry at a concentration of 4-8 ug/ml to stain Epithelial cells of renal tubule (arrows) in Human Kidney. Magnification is at 400X



### Western Blotting

**Image 2.** ALG11 antibody used at 1 ug/ml to detect target protein.