

Datasheet for ABIN635001

**anti-C14orf180 antibody (Middle Region)**[Go to Product page](#)**1** Image

## Overview

Quantity:	100 µL
Target:	C14orf180
Binding Specificity:	Middle Region
Reactivity:	Human
Host:	Rabbit
Clonality:	Polyclonal
Conjugate:	This C14orf180 antibody is un-conjugated
Application:	Western Blotting (WB)

## Product Details

Immunogen:	C14 ORF180 antibody was raised using the middle region of C14 rf180 corresponding to a region with amino acids PPAVTVHYIADKNATATVRVPGRPRPHGGSLLLQLCVCVLLVLALGLYCG
Specificity:	C14 ORF180 antibody was raised against the middle region of C14 rf180
Purification:	Affinity purified

## Target Details

Target:	C14orf180
Alternative Name:	C14ORF180 ( <a href="#">C14orf180 Products</a> )
Background:	C14orf180 is a multi-pass membrane protein. The function of the C14orf180 protein is not known.

## Target Details

Molecular Weight: 18 kDa (MW of target protein)

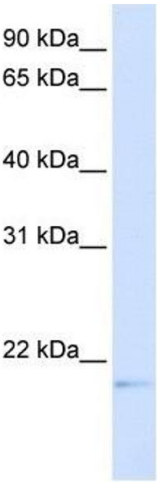
## Application Details

Application Notes:	WB: 1 µg/mL Optimal conditions should be determined by the investigator.
Comment:	C14ORF180 Blocking Peptide, catalog no. 33R-7243, is also available for use as a blocking control in assays to test for specificity of this C14ORF180 antibody
Restrictions:	For Research Use only

## Handling

Format:	Lyophilized
Reconstitution:	Lyophilized powder. Add distilled water for a 1 mg/mL concentration of C10 RF180 antibody in PBS
Concentration:	Lot specific
Buffer:	PBS
Handling Advice:	Avoid repeated freeze/thaw cycles. Dilute only prior to immediate use.
Storage:	4 °C/-20 °C
Storage Comment:	Store at 2-8 °C for short periods. For longer periods of storage, store at -20 °C.

## Images



### Western Blotting

**Image 1.** C14ORF180 antibody used at 1 ug/ml to detect target protein.