

Datasheet for ABIN635003  
**anti-CEACAM16 antibody (Middle Region)**



[Go to Product page](#)

1 Image

## Overview

Quantity:	100 µL
Target:	CEACAM16
Binding Specificity:	Middle Region
Reactivity:	Human, Mouse, Rat
Host:	Rabbit
Clonality:	Polyclonal
Conjugate:	This CEACAM16 antibody is un-conjugated
Application:	Western Blotting (WB)

## Product Details

Immunogen:	CEACAM16 antibody was raised using the middle region of CEACAM16 corresponding to a region with amino acids TVQGYPKDLLVYAWYRGPASEPNRLLSQLPSGTWIAGPAHTGREVGFPNC
Specificity:	CEACAM16 antibody was raised against the middle region of CEACAM16
Purification:	Affinity purified

## Target Details

Target:	CEACAM16
Alternative Name:	CEACAM16 ( <a href="#">CEACAM16 Products</a> )
Background:	CEACAM16 is a single-pass type I membrane protein. It belongs to the immunoglobulin superfamily, CEA family. It contains 2 Ig-like C2-type (immunoglobulin-like) domains. The exact

## Target Details

---

function of CEACAM16 remains unknown.

Molecular Weight: 53 kDa (MW of target protein)

Pathways: [Sensory Perception of Sound](#)

## Application Details

---

Application Notes: WB: 1 µg/mL  
Optimal conditions should be determined by the investigator.

Comment: CEACAM16 Blocking Peptide, catalog no. 33R-9368, is also available for use as a blocking control in assays to test for specificity of this CEACAM16 antibody

Restrictions: For Research Use only

## Handling

---

Format: Lyophilized

Reconstitution: Lyophilized powder. Add distilled water for a 1 mg/mL concentration of CEACAM16 antibody in PBS

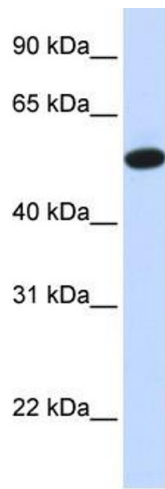
Concentration: Lot specific

Buffer: PBS

Handling Advice: Avoid repeated freeze/thaw cycles.  
Dilute only prior to immediate use.

Storage: 4 °C/-20 °C

Storage Comment: Store at 2-8 °C for short periods. For longer periods of storage, store at -20 °C.



### Western Blotting

**Image 1.** CEACAM16 antibody used at 1 ug/ml to detect target protein.