

Datasheet for ABIN635004  
**anti-TMEM138 antibody (N-Term)**



[Go to Product page](#)

1 Image

## Overview

Quantity:	100 µL
Target:	TMEM138
Binding Specificity:	N-Term
Reactivity:	Human
Host:	Rabbit
Clonality:	Polyclonal
Conjugate:	This TMEM138 antibody is un-conjugated
Application:	Western Blotting (WB)

## Product Details

Immunogen:	TMEM138 antibody was raised using the N terminal of TMEM138 corresponding to a region with amino acids MLQTSNYSLVLSLQFLLLSYDLFVNSFSELLQKTPVIQLVLFIIQDIAVL
Specificity:	TMEM138 antibody was raised against the N terminal of TMEM138
Purification:	Affinity purified

## Target Details

Target:	TMEM138
Alternative Name:	TMEM138 ( <a href="#">TMEM138 Products</a> )
Background:	TMEM138 is a multi-pass membrane protein. It belongs to the TMEM138 family. The function of the TMEM138 protein remains unknown.

## Target Details

---

Molecular Weight: 19 kDa (MW of target protein)

## Application Details

---

Application Notes: WB: 1 µg/mL  
Optimal conditions should be determined by the investigator.

Comment: TMEM138 Blocking Peptide, catalog no. 33R-6207, is also available for use as a blocking control in assays to test for specificity of this TMEM138 antibody

Restrictions: For Research Use only

## Handling

---

Format: Lyophilized

Reconstitution: Lyophilized powder. Add distilled water for a 1 mg/mL concentration of TMEM138 antibody in PBS

Concentration: Lot specific

Buffer: PBS

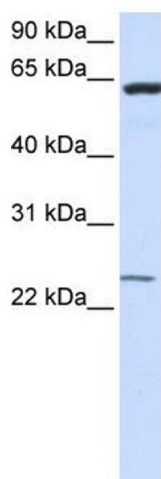
Handling Advice: Avoid repeated freeze/thaw cycles.  
Dilute only prior to immediate use.

Storage: 4 °C/-20 °C

Storage Comment: Store at 2-8 °C for short periods. For longer periods of storage, store at -20 °C.

## Images

---



### Western Blotting

**Image 1.** TMEM138 antibody used at 1 ug/ml to detect target protein.