

Datasheet for ABIN635020  
**anti-ERGIC3 antibody (C-Term)**



[Go to Product page](#)

1 Image

## Overview

Quantity:	100 µL
Target:	ERGIC3
Binding Specificity:	C-Term
Reactivity:	Human, Mouse, Rat
Host:	Rabbit
Clonality:	Polyclonal
Conjugate:	This ERGIC3 antibody is un-conjugated
Application:	Western Blotting (WB)

## Product Details

Immunogen:	ERGIC3 antibody was raised using the C terminal of ERGIC3 corresponding to a region with amino acids LTEKHRSFTHFLTGVCAlIGGMFTVAGLIDSLIYHSARAIQKKIDLGKTT
Specificity:	ERGIC3 antibody was raised against the C terminal of ERGIC3
Purification:	Affinity purified

## Target Details

Target:	ERGIC3
Alternative Name:	ERGIC3 ( <a href="#">ERGIC3 Products</a> )
Background:	ERGIC3 plays a possible role in transport between endoplasmic reticulum and Golgi.
Molecular Weight:	43 kDa (MW of target protein)

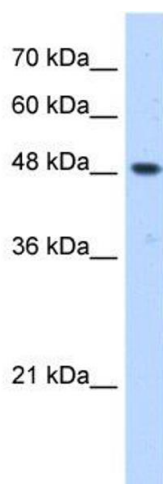
## Application Details

Application Notes:	WB: 0.5 µg/mL Optimal conditions should be determined by the investigator.
Comment:	ERGIC3 Blocking Peptide, catalog no. 33R-5472, is also available for use as a blocking control in assays to test for specificity of this ERGIC3 antibody
Restrictions:	For Research Use only

## Handling

Format:	Lyophilized
Reconstitution:	Lyophilized powder. Add distilled water for a 1 mg/mL concentration of ERGIC3 antibody in PBS
Concentration:	Lot specific
Buffer:	PBS
Handling Advice:	Avoid repeated freeze/thaw cycles. Dilute only prior to immediate use.
Storage:	4 °C/-20 °C
Storage Comment:	Store at 2-8 °C for short periods. For longer periods of storage, store at -20 °C.

## Images



### Western Blotting

**Image 1.** ERGIC3 antibody used at 0.5 µg/ml to detect target protein.