

## Datasheet for ABIN635023 **anti-ELOVL5 antibody**



[Go to Product page](#)

### 1 Image

#### Overview

Quantity:	100 µL
Target:	ELOVL5
Reactivity:	Human, Mouse
Host:	Rabbit
Clonality:	Polyclonal
Conjugate:	This ELOVL5 antibody is un-conjugated
Application:	Western Blotting (WB)

#### Product Details

Immunogen:	ELOVL5 antibody was raised using a synthetic peptide corresponding to a region with amino acids EHF <sub>D</sub> ASLSTYFKALLGPRDTRVKGWFLLDNYIPTFICSVIYLLIVWLGP <sub>K</sub>
Purification:	Affinity purified

#### Target Details

Target:	ELOVL5
Alternative Name:	ELOVL5 ( <a href="#">ELOVL5 Products</a> )
Background:	ELOVL5 plays a role in elongation of long-chain polyunsaturated fatty acids. ELOVL5 plays a role in elongation of long-chain polyunsaturated fatty acids.
Molecular Weight:	35 kDa (MW of target protein)

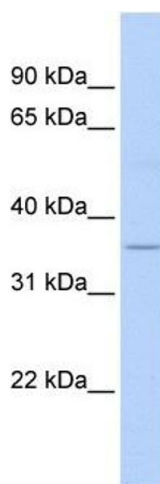
## Application Details

Application Notes:	WB: 1 µg/mL Optimal conditions should be determined by the investigator.
Comment:	ELOVL5 Blocking Peptide, catalog no. 33R-2451, is also available for use as a blocking control in assays to test for specificity of this ELOVL5 antibody
Restrictions:	For Research Use only

## Handling

Format:	Lyophilized
Reconstitution:	Lyophilized powder. Add distilled water for a 1 mg/mL concentration of ELOVL5 antibody in PBS
Concentration:	Lot specific
Buffer:	PBS
Handling Advice:	Avoid repeated freeze/thaw cycles.
Storage:	4 °C/-20 °C
Storage Comment:	Store at 2-8 °C for short periods. For longer periods of storage, store at -20 °C.

## Images



### Western Blotting

**Image 1.** ELOVL5 antibody used at 1 ug/ml to detect target protein.