

## Datasheet for ABIN635029 **anti-ACSL1 antibody (N-Term)**



[Go to Product page](#)

### 1 Image

#### Overview

Quantity:	100 µL
Target:	ACSL1 (Acs1)
Binding Specificity:	N-Term
Reactivity:	Human
Host:	Rabbit
Clonality:	Polyclonal
Conjugate:	This ACSL1 antibody is un-conjugated
Application:	Western Blotting (WB)

#### Product Details

Immunogen:	ACSL1 antibody was raised using the N terminal of ACSL1 corresponding to a region with amino acids ALLDSDEPLVYFYDDVTTLYEGFQRGIQVSNNGPCLGSRKPDQPYEWLSY
Specificity:	ACSL1 antibody was raised against the N terminal of ACSL1
Purification:	Affinity purified

#### Target Details

Target:	ACSL1 (Acs1)
Alternative Name:	ACSL1 ( <a href="#">Acs1 Products</a> )
Background:	ACSL1 encodes an isozyme of the long-chain fatty-acid-coenzyme A ligase family. Although differing in substrate specificity, subcellular localization, and tissue distribution, all isozymes of this family convert free long-chain fatty acids into fatty acyl-CoA esters, and thereby play a key

## Target Details

---

role in lipid biosynthesis and fatty acid degradation.

Molecular Weight: 78 kDa (MW of target protein)

Pathways: [Regulation of Lipid Metabolism by PPARalpha](#)

## Application Details

---

Application Notes: WB: 1 µg/mL

Optimal conditions should be determined by the investigator.

Comment: ACSL1 Blocking Peptide, catalog no. 33R-1349, is also available for use as a blocking control in assays to test for specificity of this ACSL1 antibody

Restrictions: For Research Use only

## Handling

---

Format: Lyophilized

Reconstitution: Lyophilized powder. Add distilled water for a 1 mg/mL concentration of ACSL1 antibody in PBS

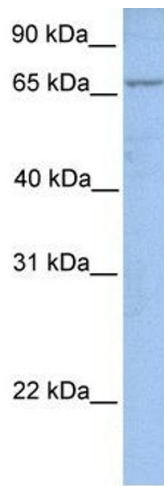
Concentration: Lot specific

Buffer: PBS

Handling Advice: Avoid repeated freeze/thaw cycles.  
Dilute only prior to immediate use.

Storage: 4 °C/-20 °C

Storage Comment: Store at 2-8 °C for short periods. For longer periods of storage, store at -20 °C.



### Western Blotting

**Image 1.** ACSL1 antibody used at 1 ug/ml to detect target protein.