

Datasheet for ABIN635042
anti-SLC25A38 antibody (Middle Region)



[Go to Product page](#)

2 Images

Overview

Quantity:	100 µL
Target:	SLC25A38
Binding Specificity:	Middle Region
Reactivity:	Human, Mouse, Rat, Dog
Host:	Rabbit
Clonality:	Polyclonal
Conjugate:	This SLC25A38 antibody is un-conjugated
Application:	Western Blotting (WB), Immunohistochemistry (IHC)

Product Details

Immunogen:	SLC25 A38 antibody was raised using the middle region of SLC25 38 corresponding to a region with amino acids VGIYFGTLYSLKQYFLRGHPPTALESVMLGVGSRVAGVCMSPITVIKTR
Specificity:	SLC25 A38 antibody was raised against the middle region of SLC25 38
Purification:	Affinity purified

Target Details

Target:	SLC25A38
Alternative Name:	SLC25A38 (SLC25A38 Products)
Background:	SLC25A38 is a members of the solute carrier family 25 (SLC25) which is known to transport molecules over the mitochondrial membrane.

Target Details

Molecular Weight: 33 kDa (MW of target protein)

Application Details

Application Notes: WB: 0.25 µg/mL, IHC: 4-8 µg/mL
Optimal conditions should be determined by the investigator.

Comment: SLC25A38 Blocking Peptide, catalog no. 33R-9563, is also available for use as a blocking control in assays to test for specificity of this SLC25A38 antibody

Restrictions: For Research Use only

Handling

Format: Lyophilized

Reconstitution: Lyophilized powder. Add distilled water for a 1 mg/mL concentration of SLC20 38 antibody in PBS

Concentration: Lot specific

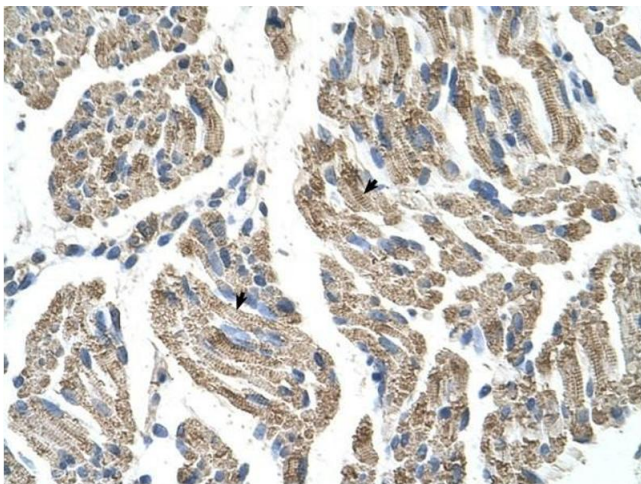
Buffer: PBS

Handling Advice: Avoid repeated freeze/thaw cycles.
Dilute only prior to immediate use.

Storage: 4 °C/-20 °C

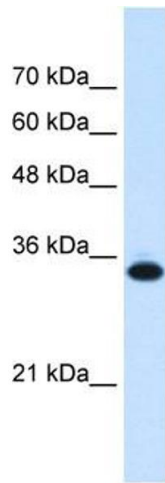
Storage Comment: Store at 2-8 °C for short periods. For longer periods of storage, store at -20 °C.

Images



Immunohistochemistry

Image 1. SLC25A38 antibody was used for immunohistochemistry at a concentration of 4-8 ug/ml to stain Skeletal muscle cells (arrows) in Human Muscle. Magnification is at 400X



Western Blotting

Image 2. SLC25A38 antibody used at 0.25 ug/ml to detect target protein.