

Datasheet for ABIN635043
anti-SLC25A31 antibody



[Go to Product page](#)

1 Image

Overview

Quantity:	100 µL
Target:	SLC25A31
Reactivity:	Human, Mouse, Rat
Host:	Rabbit
Clonality:	Polyclonal
Conjugate:	This SLC25A31 antibody is un-conjugated
Application:	Western Blotting (WB)

Product Details

Immunogen:	SLC25 A31 antibody was raised using a synthetic peptide corresponding to a region with amino acids LAGGVAAAVSKTAVAPIERVKLLQVQASSKQISPEARYKGMVDCLVRIP
Purification:	Affinity purified

Target Details

Target:	SLC25A31
Alternative Name:	SLC25A31 (SLC25A31 Products)
Background:	Mitochondrial ADP/ATP carriers, such as SLC25A31, are nuclear-coded mitochondrial proteins that catalyze the exchange of ATP generated in mitochondria by ATP synthase against ADP produced in cytosol by most energy-consuming reactions.
Molecular Weight:	35 kDa (MW of target protein)

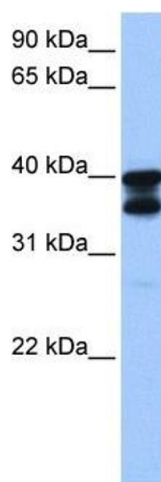
Application Details

Application Notes:	WB: 1 µg/mL Optimal conditions should be determined by the investigator.
Comment:	SLC25A31 Blocking Peptide, catalog no. 33R-4767, is also available for use as a blocking control in assays to test for specificity of this SLC25A31 antibody
Restrictions:	For Research Use only

Handling

Format:	Lyophilized
Reconstitution:	Lyophilized powder. Add distilled water for a 1 mg/mL concentration of SLC20 31 antibody in PBS
Concentration:	Lot specific
Buffer:	PBS
Handling Advice:	Avoid repeated freeze/thaw cycles.
Storage:	4 °C/-20 °C
Storage Comment:	Store at 2-8 °C for short periods. For longer periods of storage, store at -20 °C.

Images



Western Blotting

Image 1. SLC25A31 antibody used at 1 ug/ml to detect target protein.