

Datasheet for ABIN635044  
**anti-SLC25A28 antibody (C-Term)**



[Go to Product page](#)

2 Images

## Overview

Quantity:	100 µL
Target:	SLC25A28
Binding Specificity:	C-Term
Reactivity:	Human
Host:	Rabbit
Clonality:	Polyclonal
Conjugate:	This SLC25A28 antibody is un-conjugated
Application:	Western Blotting (WB)

## Product Details

Immunogen:	SLC25 A28 antibody was raised using the C terminal of SLC25 28 corresponding to a region with amino acids NTQESLALNSHITGHITGMASAFRTVYQVGGVTAYFRGVQARVIYQIPST
Specificity:	SLC25 A28 antibody was raised against the C terminal of SLC25 28
Purification:	Affinity purified

## Target Details

Target:	SLC25A28
Alternative Name:	SLC25A28 ( <a href="#">SLC25A28 Products</a> )
Background:	SLC25A28 is a mitochondrial iron transporter that mediates iron uptake. It is probably required for heme synthesis of hemoproteins and Fe-S cluster assembly in non-erythroid cells. The iron delivered into the mitochondria, presumably as Fe(2+), is then probably delivered to

## Target Details

---

ferrochelatase to catalyze Fe(2+) incorporation into protoporphyrin IX to make heme.

Molecular Weight: 39 kDa (MW of target protein)

Pathways: [Transition Metal Ion Homeostasis](#)

## Application Details

---

Application Notes: WB: 1 µg/mL  
Optimal conditions should be determined by the investigator.

Comment: SLC25A28 Blocking Peptide, catalog no. 33R-6904, is also available for use as a blocking control in assays to test for specificity of this SLC25A28 antibody

Restrictions: For Research Use only

## Handling

---

Format: Lyophilized

Reconstitution: Lyophilized powder. Add distilled water for a 1 mg/mL concentration of SLC20 28 antibody in PBS

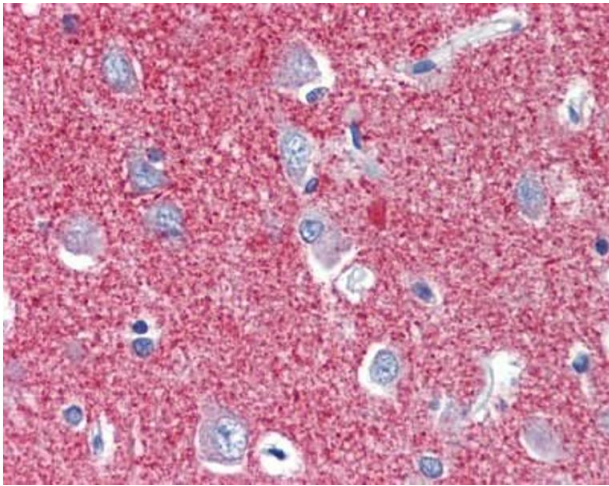
Concentration: Lot specific

Buffer: PBS

Handling Advice: Avoid repeated freeze/thaw cycles.  
Dilute only prior to immediate use.

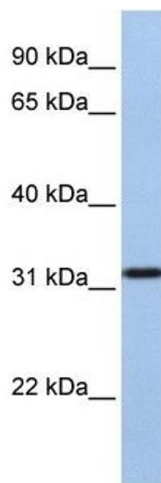
Storage: 4 °C/-20 °C

Storage Comment: Store at 2-8 °C for short periods. For longer periods of storage, store at -20 °C.



### Immunohistochemistry

**Image 1.** SLC25A28 antibody was used for immunohistochemistry at a concentration of 4-8 ug/ml. Magnification is at 400X



### Western Blotting

**Image 2.** SLC25A28 antibody used at 1 ug/ml to detect target protein.