

Datasheet for ABIN635045 **anti-GPRC5A antibody (C-Term)**



[Go to Product page](#)

1 Image

Overview

Quantity:	100 µL
Target:	GPRC5A
Binding Specificity:	C-Term
Reactivity:	Human, Mouse
Host:	Rabbit
Clonality:	Polyclonal
Conjugate:	This GPRC5A antibody is un-conjugated
Application:	Western Blotting (WB)

Product Details

Immunogen:	GPCR5 A antibody was raised using the C terminal Of Gpcr5 corresponding to a region with amino acids SQEITQGFEETGDTLYAPYSTHFQLQNQPPQKEFSIPRAHAWSPYKDY
Specificity:	GPCR5 A antibody was raised against the C terminal Of Gpcr5
Purification:	Affinity purified

Target Details

Target:	GPRC5A
Alternative Name:	GPCR5A (GPRC5A Products)
Background:	GPCR5A is a member of the type 3 G protein-coupling receptor family, characterized by the signature 7-transmembrane domain motif. The protein may be involved in interaction between retinoid acid and G protein signalling pathways. Retinoic acid plays a critical role in

Target Details

development, cellular growth, and differentiation. Its gene may play a role in embryonic development and epithelial cell differentiation.

Molecular Weight: 39 kDa (MW of target protein)

Application Details

Application Notes: WB: 1 µg/mL
Optimal conditions should be determined by the investigator.

Comment: GPCR5A Blocking Peptide, catalog no. 33R-8711, is also available for use as a blocking control in assays to test for specificity of this GPCR5A antibody

Restrictions: For Research Use only

Handling

Format: Lyophilized

Reconstitution: Lyophilized powder. Add distilled water for a 1 mg/mL concentration of GPCR0 antibody in PBS

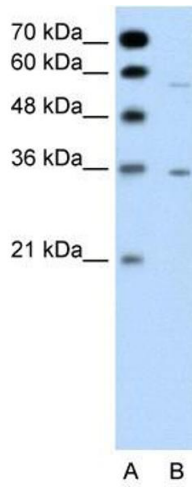
Concentration: Lot specific

Buffer: PBS

Handling Advice: Avoid repeated freeze/thaw cycles.
Dilute only prior to immediate use.

Storage: 4 °C/-20 °C

Storage Comment: Store at 2-8 °C for short periods. For longer periods of storage, store at -20 °C.



Western Blotting

Image 1. GPCR5A antibody used at 1 ug/ml to detect target protein.