

Datasheet for ABIN635047
anti-SLC25A32 antibody (Middle Region)



[Go to Product page](#)

1 Image

Overview

Quantity:	100 µL
Target:	SLC25A32
Binding Specificity:	Middle Region
Reactivity:	Human, Mouse, Rat
Host:	Rabbit
Clonality:	Polyclonal
Conjugate:	This SLC25A32 antibody is un-conjugated
Application:	Western Blotting (WB)

Product Details

Immunogen:	SLC25 A32 antibody was raised using the middle region of SLC25 32 corresponding to a region with amino acids NRLPEAQLSTVEYISVAALSKIFAVAATYPYQVVRARLQDQHMFYSGVID
Specificity:	SLC25 A32 antibody was raised against the middle region of SLC25 32
Purification:	Affinity purified

Target Details

Target:	SLC25A32
Alternative Name:	SLC25A32 (SLC25A32 Products)
Background:	SLC25A32 transports folate across the inner membranes of mitochondria. Folate metabolism is distributed between the cytosolic and mitochondrial compartments. SLC25A32 is a transporter that shuttles folates from the cytoplasm into mitochondria.

Target Details

Molecular Weight: 35 kDa (MW of target protein)

Pathways: [Dicarboxylic Acid Transport](#)

Application Details

Application Notes: WB: 1 µg/mL
Optimal conditions should be determined by the investigator.

Comment: SLC25A32 Blocking Peptide, catalog no. 33R-6857, is also available for use as a blocking control in assays to test for specificity of this SLC25A32 antibody

Restrictions: For Research Use only

Handling

Format: Lyophilized

Reconstitution: Lyophilized powder. Add distilled water for a 1 mg/mL concentration of SLC20 32 antibody in PBS

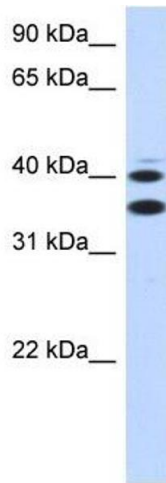
Concentration: Lot specific

Buffer: PBS

Handling Advice: Avoid repeated freeze/thaw cycles.
Dilute only prior to immediate use.

Storage: 4 °C/-20 °C

Storage Comment: Store at 2-8 °C for short periods. For longer periods of storage, store at -20 °C.



Western Blotting

Image 1. SLC25A32 antibody used at 1 ug/ml to detect target protein.