

Datasheet for ABIN635048
anti-SLC25A28 antibody (Middle Region)



[Go to Product page](#)

1 Image

Overview

Quantity:	100 µL
Target:	SLC25A28
Binding Specificity:	Middle Region
Reactivity:	Human, Mouse, Rat
Host:	Rabbit
Clonality:	Polyclonal
Conjugate:	This SLC25A28 antibody is un-conjugated
Application:	Western Blotting (WB)

Product Details

Immunogen:	SLC25 A28 antibody was raised using the middle region of SLC25 28 corresponding to a region with amino acids VWQNEGAGAFYRSYTTQLTMNVFPQAIHFMTYEFLQEHFNPQRRYNPSSH
Specificity:	SLC25 A28 antibody was raised against the middle region of SLC25 28
Purification:	Affinity purified

Target Details

Target:	SLC25A28
Alternative Name:	SLC25A28 (SLC25A28 Products)
Background:	SLC25A28 is a mitochondrial iron transporter that mediates iron uptake. It is probably required for heme synthesis of hemoproteins and Fe-S cluster assembly in non-erythroid cells. The iron delivered into the mitochondria, presumably as Fe(2+), is then probably delivered to

Target Details

ferrochelatase to catalyze Fe(2+) incorporation into protoporphyrin IX to make heme.

Molecular Weight: 39 kDa (MW of target protein)

Pathways: [Transition Metal Ion Homeostasis](#)

Application Details

Application Notes: WB: 1 µg/mL

Optimal conditions should be determined by the investigator.

Comment: SLC25A28 Blocking Peptide, catalog no. 33R-9911, is also available for use as a blocking control in assays to test for specificity of this SLC25A28 antibody

Restrictions: For Research Use only

Handling

Format: Lyophilized

Reconstitution: Lyophilized powder. Add distilled water for a 1 mg/mL concentration of SLC20 28 antibody in PBS

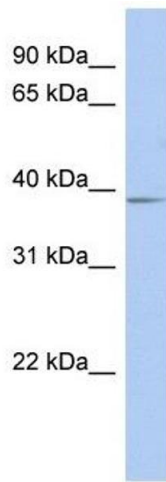
Concentration: Lot specific

Buffer: PBS

Handling Advice: Avoid repeated freeze/thaw cycles.
Dilute only prior to immediate use.

Storage: 4 °C/-20 °C

Storage Comment: Store at 2-8 °C for short periods. For longer periods of storage, store at -20 °C.



Western Blotting

Image 1. SLC25A28 antibody used at 1 ug/ml to detect target protein.