

Datasheet for ABIN635057
anti-CXorf66 antibody (Middle Region)



[Go to Product page](#)

1 Image

Overview

Quantity:	100 µL
Target:	CXorf66
Binding Specificity:	Middle Region
Reactivity:	Human
Host:	Rabbit
Clonality:	Polyclonal
Conjugate:	This CXorf66 antibody is un-conjugated
Application:	Western Blotting (WB)

Product Details

Immunogen:	CXorf66 antibody was raised using the middle region of CXorf66 corresponding to a region with amino acids PLYSSHPQNEISPSKPFQELAKPPKHFNPKRSVSLGRAALLSNSLAE
Specificity:	CXorf66 antibody was raised against the middle region of CXorf66
Purification:	Affinity purified

Target Details

Target:	CXorf66
Alternative Name:	CXorf66 (CXorf66 Products)
Background:	The protein encoded by this gene is predicted to be a type I membrane protein, however, its exact function is not known.

Target Details

Molecular Weight: 40 kDa (MW of target protein)

Application Details

Application Notes: WB: 1 µg/mL
Optimal conditions should be determined by the investigator.

Comment: CXorf66 Blocking Peptide, catalog no. 33R-7216, is also available for use as a blocking control in assays to test for specificity of this CXorf66 antibody

Restrictions: For Research Use only

Handling

Format: Lyophilized

Reconstitution: Lyophilized powder. Add distilled water for a 1 mg/mL concentration of CXorf66 antibody in PBS

Concentration: Lot specific

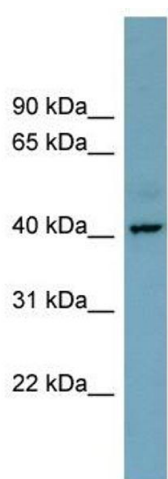
Buffer: PBS

Handling Advice: Avoid repeated freeze/thaw cycles.
Dilute only prior to immediate use.

Storage: 4 °C/-20 °C

Storage Comment: Store at 2-8 °C for short periods. For longer periods of storage, store at -20 °C.

Images



Western Blotting

Image 1. CXorf66 antibody used at 1 ug/ml to detect target protein.