

Datasheet for ABIN635063 **anti-NHEDC2 antibody (C-Term)**



[Go to Product page](#)

1 Image

Overview

| | |
|----------------------|---------------------------------------|
| Quantity: | 100 µL |
| Target: | NHEDC2 |
| Binding Specificity: | C-Term |
| Reactivity: | Human, Mouse, Rat |
| Host: | Rabbit |
| Clonality: | Polyclonal |
| Conjugate: | This NHEDC2 antibody is un-conjugated |
| Application: | Western Blotting (WB) |

Product Details

| | |
|---------------|---|
| Immunogen: | NHEDC2 antibody was raised using the C terminal of NHEDC2 corresponding to a region with amino acids IFISFAWLPKATVQAAIGSVALDTARSHGEKQLEDYGMDVLTVAFLSILI |
| Specificity: | NHEDC2 antibody was raised against the C terminal of NHEDC2 |
| Purification: | Affinity purified |

Target Details

| | |
|-------------------|---|
| Target: | NHEDC2 |
| Alternative Name: | NHEDC2 (NHEDC2 Products) |
| Background: | Sodium hydrogen antiporters, such as NHEDC2, convert the proton motive force established by the respiratory chain or the F1F0 mitochondrial ATPase into sodium gradients that drive other energy-requiring processes, transduce environmental signals into cell responses, or function in |

Target Details

drug efflux.

Molecular Weight: 57 kDa (MW of target protein)

Pathways: [Proton Transport](#)

Application Details

Application Notes: WB: 1 µg/mL
Optimal conditions should be determined by the investigator.

Comment: NHEDC2 Blocking Peptide, catalog no. 33R-3957, is also available for use as a blocking control in assays to test for specificity of this NHEDC2 antibody

Restrictions: For Research Use only

Handling

Format: Lyophilized

Reconstitution: Lyophilized powder. Add distilled water for a 1 mg/mL concentration of NHEDC2 antibody in PBS

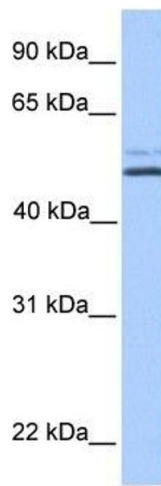
Concentration: Lot specific

Buffer: PBS

Handling Advice: Avoid repeated freeze/thaw cycles.
Dilute only prior to immediate use.

Storage: 4 °C/-20 °C

Storage Comment: Store at 2-8 °C for short periods. For longer periods of storage, store at -20 °C.



Western Blotting

Image 1. NHEDC2 antibody used at 1 ug/ml to detect target protein.