

Datasheet for ABIN635067
anti-SLC25A32 antibody (N-Term)



[Go to Product page](#)

1 Image

Overview

Quantity:	100 µL
Target:	SLC25A32
Binding Specificity:	N-Term
Reactivity:	Human, Mouse, Rat, Dog
Host:	Rabbit
Clonality:	Polyclonal
Conjugate:	This SLC25A32 antibody is un-conjugated
Application:	Western Blotting (WB)

Product Details

Immunogen:	SLC25 A32 antibody was raised using the N terminal of SLC25 32 corresponding to a region with amino acids VRYENLIAGVSGGVLSNLALHPLDLVKIRFAVSDGLELRPKYNGILHCLT
Specificity:	SLC25 A32 antibody was raised against the N terminal of SLC25 32
Purification:	Affinity purified

Target Details

Target:	SLC25A32
Alternative Name:	SLC25A32 (SLC25A32 Products)
Background:	SLC25A21 is a homolog of the <i>S. cerevisiae</i> ODC proteins, mitochondrial carriers that transport C5-C7 oxodicarboxylates across inner mitochondrial membranes. One of the species transported by ODC is 2-oxoadipate, a common intermediate in the catabolism of lysine,

Target Details

tryptophan, and hydroxylysine in mammals.

Molecular Weight: 35 kDa (MW of target protein)

Pathways: [Dicarboxylic Acid Transport](#)

Application Details

Application Notes: WB: 0.25 µg/mL
Optimal conditions should be determined by the investigator.

Comment: SLC25A32 Blocking Peptide, catalog no. 33R-9795, is also available for use as a blocking control in assays to test for specificity of this SLC25A32 antibody

Restrictions: For Research Use only

Handling

Format: Lyophilized

Reconstitution: Lyophilized powder. Add distilled water for a 1 mg/mL concentration of SLC20 32 antibody in PBS

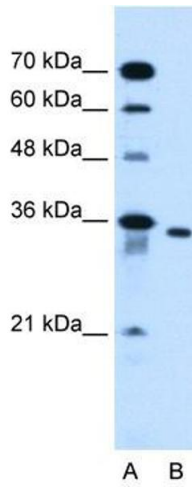
Concentration: Lot specific

Buffer: PBS

Handling Advice: Avoid repeated freeze/thaw cycles.
Dilute only prior to immediate use.

Storage: 4 °C/-20 °C

Storage Comment: Store at 2-8 °C for short periods. For longer periods of storage, store at -20 °C.



Western Blotting

Image 1. SLC25A32 antibody used at 0.25 ug/ml to detect target protein.