

Datasheet for ABIN635085  
**anti-SLC25A46 antibody (C-Term)**



[Go to Product page](#)

1 Image

## Overview

|                      |   |
|----------------------|---|
| Quantity:            | 100 µL                                  |
| Target:              | SLC25A46                                |
| Binding Specificity: | C-Term                                  |
| Reactivity:          | Human, Mouse                            |
| Host:                | Rabbit                                  |
| Clonality:           | Polyclonal                              |
| Conjugate:           | This SLC25A46 antibody is un-conjugated |
| Application:         | Western Blotting (WB)                   |

## Product Details

|               |  |
|---------------|--|
| Immunogen:    | SLC25 A46 antibody was raised using the C terminal of SLC25 46 corresponding to a region with amino acids LKRKTYNSHLAESTSPVQSMLDAYFPELIANFAASLCSDVILYPLETVLH |
| Specificity:  | SLC25 A46 antibody was raised against the C terminal of SLC25 46   |
| Purification: | Affinity purified  |

## Target Details

|                   |   |
|-------------------|---|
| Target:           | SLC25A46  |
| Alternative Name: | SLC25A46 ( <a href="#">SLC25A46 Products</a> )  |
| Background:       | SLC25A46 is a members of the solute carrier family 25 (SLC25) which is known to transport molecules over the mitochondrial membrane.SLC25A46 belongs to the SLC25 family of mitochondrial carrier proteins. |

## Target Details

---

Molecular Weight: 46 kDa (MW of target protein)

## Application Details

---

Application Notes: WB: 1 µg/mL

Optimal conditions should be determined by the investigator.

Comment: SLC25A46 Blocking Peptide, catalog no. 33R-5100, is also available for use as a blocking control in assays to test for specificity of this SLC25A46 antibody

Restrictions: For Research Use only

## Handling

---

Format: Lyophilized

Reconstitution: Lyophilized powder. Add distilled water for a 1 mg/mL concentration of SLC20 46 antibody in PBS

Concentration: Lot specific

Buffer: PBS

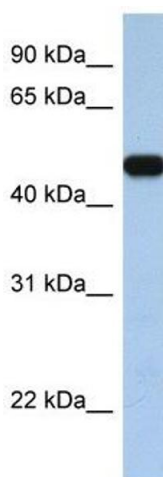
Handling Advice: Avoid repeated freeze/thaw cycles.  
Dilute only prior to immediate use.

Storage: 4 °C/-20 °C

Storage Comment: Store at 2-8 °C for short periods. For longer periods of storage, store at -20 °C.

## Validation report #100007 for Western Blotting (WB)

---



### Western Blotting

**Image 1.** SLC25A46 antibody used at 1 µg/ml to detect target protein.