

Datasheet for ABIN635087
anti-SLC25A35 antibody (N-Term)



[Go to Product page](#)

1 Image

Overview

Quantity:	100 µL
Target:	SLC25A35
Binding Specificity:	N-Term
Reactivity:	Human, Mouse, Rat
Host:	Rabbit
Clonality:	Polyclonal
Conjugate:	This SLC25A35 antibody is un-conjugated
Application:	Western Blotting (WB)

Product Details

Immunogen:	SLC25 A35 antibody was raised using the N terminal of SLC25 35 corresponding to a region with amino acids DFLMSGLAACGACVFTNPLEVVKTRMQLQGELQAPGTYQRHYRNVFHAFI
Specificity:	SLC25 A35 antibody was raised against the N terminal of SLC25 35
Purification:	Affinity purified

Target Details

Target:	SLC25A35
Alternative Name:	SLC25A35 (SLC25A35 Products)
Background:	SLC25A35 belongs to the mitochondrial carrier family. It contains 3 Solcar repeats. It is a multi-pass membrane protein. The functions of SLC25A35 remain unknown.SLC25A35 belongs to the SLC25 family of mitochondrial carrier proteins.

Target Details

Molecular Weight: 31 kDa (MW of target protein)

Application Details

Application Notes: WB: 1 µg/mL
Optimal conditions should be determined by the investigator.

Comment: SLC25A35 Blocking Peptide, catalog no. 33R-1931, is also available for use as a blocking control in assays to test for specificity of this SLC25A35 antibody

Restrictions: For Research Use only

Handling

Format: Lyophilized

Reconstitution: Lyophilized powder. Add distilled water for a 1 mg/mL concentration of SLC20 35 antibody in PBS

Concentration: Lot specific

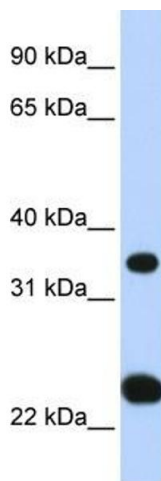
Buffer: PBS

Handling Advice: Avoid repeated freeze/thaw cycles.
Dilute only prior to immediate use.

Storage: 4 °C/-20 °C

Storage Comment: Store at 2-8 °C for short periods. For longer periods of storage, store at -20 °C.

Images



Western Blotting

Image 1. SLC25A35 antibody used at 1 ug/ml to detect target protein.