

Datasheet for ABIN635095
anti-SFXN1 antibody (N-Term)



[Go to Product page](#)

1 Image

Overview

Quantity:	100 µL
Target:	SFXN1
Binding Specificity:	N-Term
Reactivity:	Human
Host:	Rabbit
Clonality:	Polyclonal
Conjugate:	This SFXN1 antibody is un-conjugated
Application:	Western Blotting (WB)

Product Details

Immunogen:	Sideroflexin 1 antibody was raised using the N terminal of SFXN1 corresponding to a region with amino acids MSGELPPNINIKEPRWDQSTFIGRANHFFTVTDPRNILLTNEQLESARKI
Specificity:	Sideroflexin 1 antibody was raised against the N terminal of SFXN1
Purification:	Affinity purified

Target Details

Target:	SFXN1
Alternative Name:	Sideroflexin 1 (SFXN1 Products)
Background:	SFXN1 might be involved in the transport of a component required for iron utilization into or out of the mitochondria.

Target Details

Molecular Weight: 35 kDa (MW of target protein)

Pathways: [Transition Metal Ion Homeostasis](#)

Application Details

Application Notes: WB: 1 µg/mL

Optimal conditions should be determined by the investigator.

Comment: Sideroflexin 1 Blocking Peptide, catalog no. 33R-6424, is also available for use as a blocking control in assays to test for specificity of this Sideroflexin 1 antibody

Restrictions: For Research Use only

Handling

Format: Lyophilized

Reconstitution: Lyophilized powder. Add distilled water for a 1 mg/mL concentration of SFXN1 antibody in PBS

Concentration: Lot specific

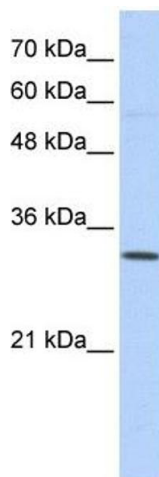
Buffer: PBS

Handling Advice: Avoid repeated freeze/thaw cycles.
Dilute only prior to immediate use.

Storage: 4 °C/-20 °C

Storage Comment: Store at 2-8 °C for short periods. For longer periods of storage, store at -20 °C.

Images



Western Blotting

Image 1. Sideroflexin 1 antibody used at 1 µg/ml to detect target protein.