

Datasheet for ABIN635097
anti-CYP4A22 antibody (N-Term)



[Go to Product page](#)

2 Images

Overview

Quantity:	100 µL
Target:	CYP4A22
Binding Specificity:	N-Term
Reactivity:	Human
Host:	Rabbit
Clonality:	Polyclonal
Conjugate:	This CYP4A22 antibody is un-conjugated
Application:	Western Blotting (WB), Immunohistochemistry (IHC)

Product Details

Immunogen:	CYP4 A22 antibody was raised using the N terminal of CYP4 22 corresponding to a region with amino acids MSVSVLSPSRRLGGVSGILQVTSLLILLILLIKAAQLYLHRQWLLKALQQ
Specificity:	CYP4 A22 antibody was raised against the N terminal of CYP4 22
Purification:	Affinity purified

Target Details

Target:	CYP4A22
Alternative Name:	CYP4A22 (CYP4A22 Products)
Background:	CYP4A22 is a member of the cytochrome P450 superfamily of enzymes. The cytochrome P450 proteins are monooxygenases which catalyze many reactions involved in drug metabolism and synthesis of cholesterol, steroids and other lipids.

Target Details

Molecular Weight: 57 kDa (MW of target protein)

Pathways: [Regulation of Lipid Metabolism by PPARalpha, Monocarboxylic Acid Catabolic Process](#)

Application Details

Application Notes: WB: 0.25 µg/mL, IHC: 4-8 µg/mL
Optimal conditions should be determined by the investigator.

Comment: CYP4A22 Blocking Peptide, catalog no. 33R-6526, is also available for use as a blocking control in assays to test for specificity of this CYP4A22 antibody

Restrictions: For Research Use only

Handling

Format: Lyophilized

Reconstitution: Lyophilized powder. Add distilled water for a 1 mg/mL concentration of CYP0 22 antibody in PBS

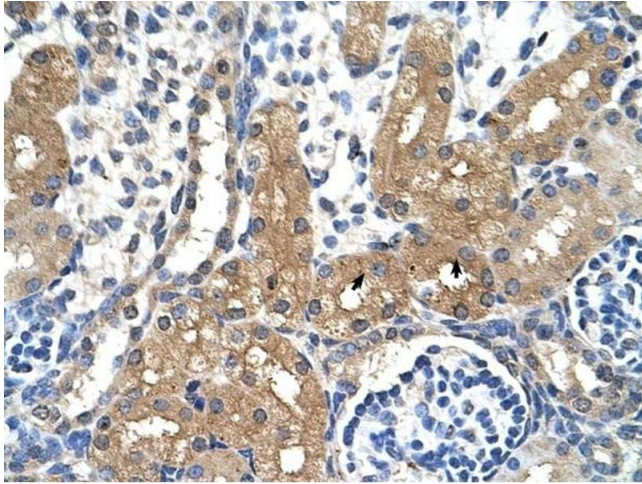
Concentration: Lot specific

Buffer: PBS

Handling Advice: Avoid repeated freeze/thaw cycles.
Dilute only prior to immediate use.

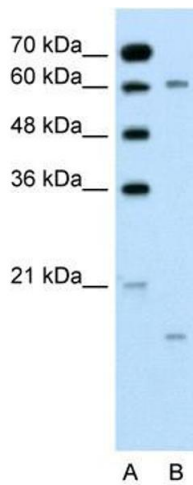
Storage: 4 °C/-20 °C

Storage Comment: Store at 2-8 °C for short periods. For longer periods of storage, store at -20 °C.



Immunohistochemistry

Image 1. CYP4A22 antibody was used for immunohistochemistry at a concentration of 4-8 ug/ml to stain Epithelial cells of renal tubule (arrows) in Human Kidney. Magnification is at 400X



Western Blotting

Image 2. CYP4A22 antibody used at 0.25 ug/ml to detect target protein.