

## Datasheet for ABIN635108 **anti-SLC15A2 antibody**



[Go to Product page](#)

### 1 Image

#### Overview

Quantity:	100 µL
Target:	SLC15A2
Reactivity:	Human
Host:	Rabbit
Clonality:	Polyclonal
Conjugate:	This SLC15A2 antibody is un-conjugated
Application:	Western Blotting (WB)

#### Product Details

Immunogen:	SLC15 A2 antibody was raised using a synthetic peptide corresponding to a region with amino acids GNENNSLLIESIKSFQKTPHYSKHLHLKTKSQDFHFHLKYHNLSLYTEHSV
Purification:	Affinity purified

#### Target Details

Target:	SLC15A2
Alternative Name:	SLC15A2 ( <a href="#">SLC15A2 Products</a> )
Background:	SLC15A2 belongs to the PTR2/POT transporter family. It is a multi-pass membrane protein. The expression/activity of PEPT2 (SLC15A2) may be a critical factor in the modulation of opioidergic neurotransmission in vivo.
Molecular Weight:	82 kDa (MW of target protein)

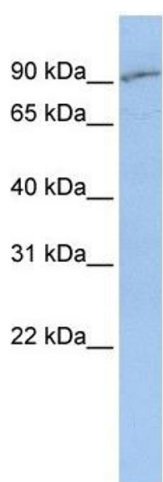
## Application Details

Application Notes:	WB: 1 µg/mL Optimal conditions should be determined by the investigator.
Comment:	SLC15A2 Blocking Peptide, catalog no. 33R-3445, is also available for use as a blocking control in assays to test for specificity of this SLC15A2 antibody
Restrictions:	For Research Use only

## Handling

Format:	Lyophilized
Reconstitution:	Lyophilized powder. Add distilled water for a 1 mg/mL concentration of SLC10 2 antibody in PBS
Concentration:	Lot specific
Buffer:	PBS
Handling Advice:	Avoid repeated freeze/thaw cycles.
Storage:	4 °C/-20 °C
Storage Comment:	Store at 2-8 °C for short periods. For longer periods of storage, store at -20 °C.

## Images



### Western Blotting

**Image 1.** SLC15A2 antibody used at 1 ug/ml to detect target protein.