

Datasheet for ABIN635109
anti-SLC46A1 antibody



[Go to Product page](#)

1 Image

Overview

Quantity:	100 µL
Target:	SLC46A1
Reactivity:	Human, Mouse, Rat
Host:	Rabbit
Clonality:	Polyclonal
Conjugate:	This SLC46A1 antibody is un-conjugated
Application:	Western Blotting (WB)

Product Details

Immunogen:	SLC46 A1 antibody was raised using a synthetic peptide corresponding to a region with amino acids MEGSASPPEKPRARPAAAVLCRGPVEPLVFLANFALVLQGPLTTQYLWHR
Purification:	Affinity purified

Target Details

Target:	SLC46A1
Alternative Name:	SLC46A1 (SLC46A1 Products)
Background:	This gene encodes a transmembrane proton-coupled folate transporter protein that facilitates the movement of folate and antifolate substrates across cell membranes optimally in acidic pH environments.
Molecular Weight:	50 kDa (MW of target protein)
Pathways:	Transition Metal Ion Homeostasis, Dicarboxylic Acid Transport

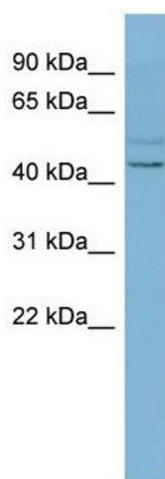
Application Details

Application Notes:	WB: 1 µg/mL Optimal conditions should be determined by the investigator.
Comment:	SLC46A1 Blocking Peptide, catalog no. 33R-5921, is also available for use as a blocking control in assays to test for specificity of this SLC46A1 antibody
Restrictions:	For Research Use only

Handling

Format:	Lyophilized
Reconstitution:	Lyophilized powder. Add distilled water for a 1 mg/mL concentration of SLC40 1 antibody in PBS
Concentration:	Lot specific
Buffer:	PBS
Handling Advice:	Avoid repeated freeze/thaw cycles.
Storage:	4 °C/-20 °C
Storage Comment:	Store at 2-8 °C for short periods. For longer periods of storage, store at -20 °C.

Images



Western Blotting

Image 1. SLC46A1 antibody used at 1 ug/ml to detect target protein.