

Datasheet for ABIN635111
anti-LRRC8B antibody (Middle Region)



[Go to Product page](#)

3 Images

Overview

Quantity:	100 µL
Target:	LRRC8B
Binding Specificity:	Middle Region
Reactivity:	Human, Mouse, Rat
Host:	Rabbit
Clonality:	Polyclonal
Conjugate:	This LRRC8B antibody is un-conjugated
Application:	Western Blotting (WB)

Product Details

Immunogen:	LRRC8 B antibody was raised using the middle region of LRRC8 corresponding to a region with amino acids TLYLKSSLSRIPQVVTDLLPSLQKLSLDNEGSKLVVLNNLKKMVNLSLE
Specificity:	LRRC8 B antibody was raised against the middle region of LRRC8
Purification:	Affinity purified

Target Details

Target:	LRRC8B
Alternative Name:	LRRC8B (LRRC8B Products)
Background:	The function of LRRC8B protein has not been widely studied, and is yet to be fully elucidated.
Molecular Weight:	92 kDa (MW of target protein)

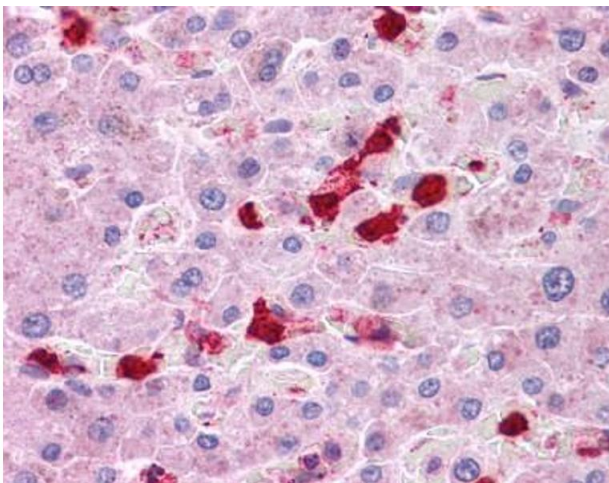
Application Details

Application Notes:	WB: 1 µg/mL Optimal conditions should be determined by the investigator.
Comment:	LRRC8B Blocking Peptide, catalog no. 33R-9195, is also available for use as a blocking control in assays to test for specificity of this LRRC8B antibody
Restrictions:	For Research Use only

Handling

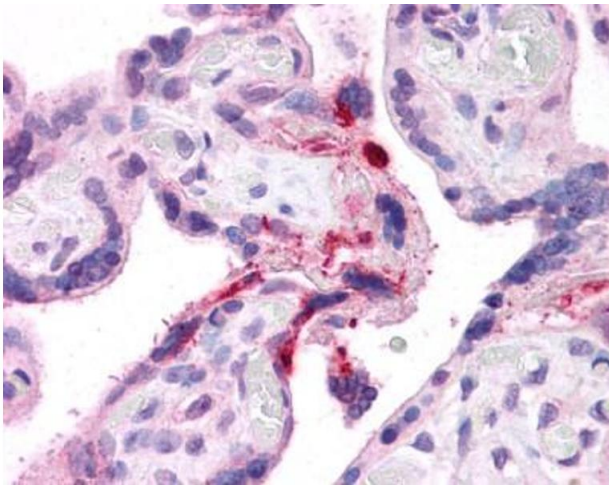
Format:	Lyophilized
Reconstitution:	Lyophilized powder. Add distilled water for a 1 mg/mL concentration of LRRC0 antibody in PBS
Concentration:	Lot specific
Buffer:	PBS
Handling Advice:	Avoid repeated freeze/thaw cycles. Dilute only prior to immediate use.
Storage:	4 °C/-20 °C
Storage Comment:	Store at 2-8 °C for short periods. For longer periods of storage, store at -20 °C.

Images



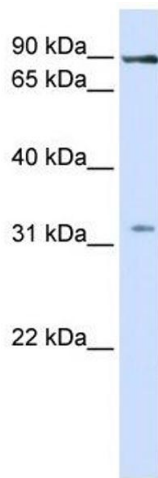
Immunohistochemistry

Image 1. LRRC8B antibody was used for immunohistochemistry at a concentration of 4-8 µg/ml. Magnification is at 400X



Immunohistochemistry

Image 2. LRRC8B antibody was used for immunohistochemistry at a concentration of 4-8 ug/ml. Magnification is at 400X



Western Blotting

Image 3. LRRC8B antibody used at 1 ug/ml to detect target protein.