

Datasheet for ABIN635118

**anti-Solute Carrier Family 5 (Sodium/inositol Cotransporter),
Member 11 (SLC5A11) antibody**[Go to Product page](#)**1** Image

Overview

Quantity:	100 µL
Target:	Solute Carrier Family 5 (Sodium/inositol Cotransporter), Member 11 (SLC5A11)
Reactivity:	Human, Mouse, Rat, Dog
Host:	Rabbit
Clonality:	Polyclonal
Conjugate:	Un-conjugated
Application:	Western Blotting (WB)

Product Details

Immunogen:	SLC5 A11 antibody was raised using a synthetic peptide corresponding to a region with amino acids VGGMEGLKEYFLALASNRSENSSCGLPREDAFHIFRDPLTSDLPWPGVL
Purification:	Affinity purified

Target Details

Target:	Solute Carrier Family 5 (Sodium/inositol Cotransporter), Member 11 (SLC5A11)
Alternative Name:	SLC5A11 (SLC5A11 Products)
Background:	Cotransporters, such as SLC5A11, represent a major class of proteins that make use of ion gradients to drive active transport for the cellular accumulation of nutrients, neurotransmitters, osmolytes, and ions.
Molecular Weight:	74 kDa (MW of target protein)

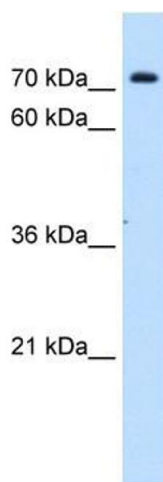
Application Details

Application Notes:	WB: 1 µg/mL Optimal conditions should be determined by the investigator.
Comment:	SLC5A11 Blocking Peptide, catalog no. 33R-9555, is also available for use as a blocking control in assays to test for specificity of this SLC5A11 antibody
Restrictions:	For Research Use only

Handling

Format:	Lyophilized
Reconstitution:	Lyophilized powder. Add distilled water for a 1 mg/mL concentration of SLC0 11 antibody in PBS
Concentration:	Lot specific
Buffer:	PBS
Handling Advice:	Avoid repeated freeze/thaw cycles.
Storage:	4 °C/-20 °C
Storage Comment:	Store at 2-8 °C for short periods. For longer periods of storage, store at -20 °C.

Images



Western Blotting

Image 1. SLC5A11 antibody used at 1 ug/ml to detect target protein.