

Datasheet for ABIN635119  
**anti-SLC15A4 antibody (N-Term)**



[Go to Product page](#)

3 Images

## Overview

Quantity:	100 µL
Target:	SLC15A4
Binding Specificity:	N-Term
Reactivity:	Human
Host:	Rabbit
Clonality:	Polyclonal
Conjugate:	This SLC15A4 antibody is un-conjugated
Application:	Western Blotting (WB), Immunohistochemistry (IHC)

## Product Details

Immunogen:	SLC15 A4 antibody was raised using the N terminal of SLC15 4 corresponding to a region with amino acids MEGSGGGAGERAPLLGARRAAAAAAAAAGAFAGRRRAACGAVLLTELLERAA
Specificity:	SLC15 A4 antibody was raised against the N terminal of SLC15 4
Purification:	Affinity purified

## Target Details

Target:	SLC15A4
Alternative Name:	SLC15A4 ( <a href="#">SLC15A4 Products</a> )
Background:	SLC15A4 is a proton oligopeptide cotransporter. It transports free histidine and certain di- and tripeptides.

## Target Details

Molecular Weight: 62 kDa (MW of target protein)

## Application Details

Application Notes: WB: 0.25 µg/mL, IHC: 4-8 µg/mL  
Optimal conditions should be determined by the investigator.

Comment: SLC15A4 Blocking Peptide, catalog no. 33R-5922, is also available for use as a blocking control in assays to test for specificity of this SLC15A4 antibody

Restrictions: For Research Use only

## Handling

Format: Lyophilized

Reconstitution: Lyophilized powder. Add distilled water for a 1 mg/mL concentration of SLC10 4 antibody in PBS

Concentration: Lot specific

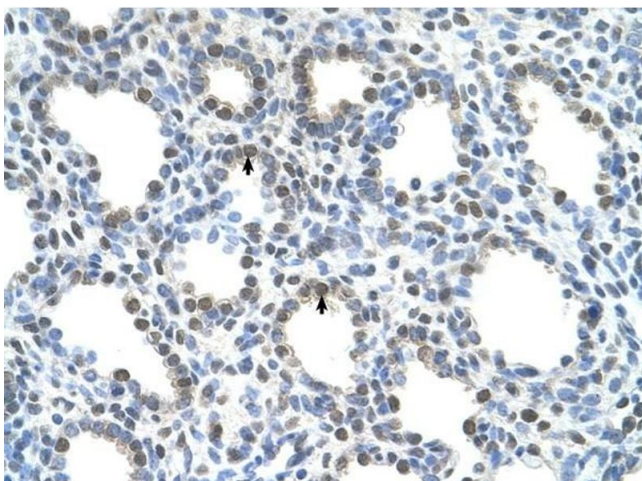
Buffer: PBS

Handling Advice: Avoid repeated freeze/thaw cycles.  
Dilute only prior to immediate use.

Storage: 4 °C/-20 °C

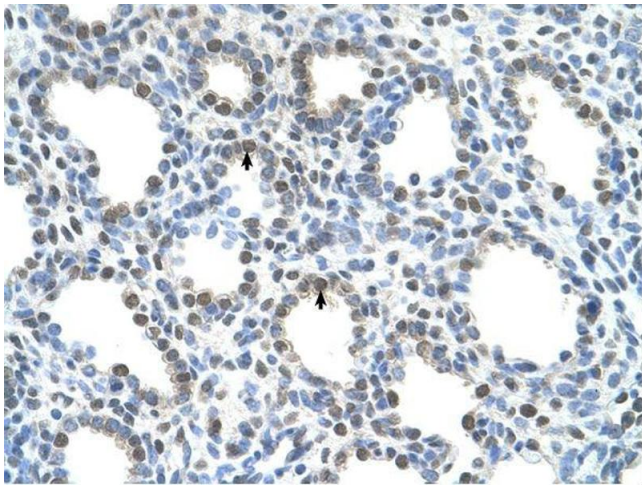
Storage Comment: Store at 2-8 °C for short periods. For longer periods of storage, store at -20 °C.

## Images



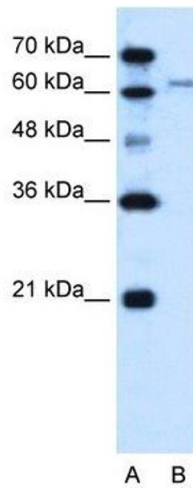
### Immunohistochemistry

**Image 1.** SLC15A4 antibody was used for immunohistochemistry at a concentration of 4-8 ug/ml to stain Alveolar cells (arrows) in Human Lung. Magnification is at 400X



### Immunohistochemistry

**Image 2.** SLC15A4 antibody was used for immunohistochemistry at a concentration of 4-8 ug/ml. Magnification is at 400X



### Western Blotting

**Image 3.** SLC15A4 antibody used at 0.25 ug/ml to detect target protein.