

Datasheet for ABIN635122
anti-ANO3 antibody (C-Term)



[Go to Product page](#)

1 Image

Overview

Quantity:	100 µL
Target:	ANO3
Binding Specificity:	C-Term
Reactivity:	Human, Mouse, Rat
Host:	Rabbit
Clonality:	Polyclonal
Conjugate:	This ANO3 antibody is un-conjugated
Application:	Western Blotting (WB)

Product Details

Immunogen:	TMEM16 C antibody was raised using the C terminal of TMEM16 corresponding to a region with amino acids AFVIAITSDYIPRFVYEYKYGPCANHVEPSENCLKGYVNNLSFFDLSEL
Specificity:	TMEM16 C antibody was raised against the C terminal of TMEM16
Purification:	Affinity purified

Target Details

Target:	ANO3
Alternative Name:	TMEM16C (ANO3 Products)
Background:	TMEM16C is a multi-pass membrane proteinPotential. It belongs to the anoctamin family. TMEM16C may act as a calcium-activated chloride channel.

Target Details

Molecular Weight: 115 kDa (MW of target protein)

Application Details

Application Notes: WB: 1 µg/mL
Optimal conditions should be determined by the investigator.

Comment: TMEM16C Blocking Peptide, catalog no. 33R-1181, is also available for use as a blocking control in assays to test for specificity of this TMEM16C antibody

Restrictions: For Research Use only

Handling

Format: Lyophilized

Reconstitution: Lyophilized powder. Add distilled water for a 1 mg/mL concentration of TMEM10 antibody in PBS

Concentration: Lot specific

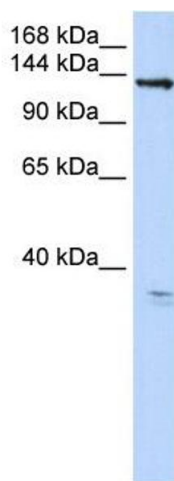
Buffer: PBS

Handling Advice: Avoid repeated freeze/thaw cycles.
Dilute only prior to immediate use.

Storage: 4 °C/-20 °C

Storage Comment: Store at 2-8 °C for short periods. For longer periods of storage, store at -20 °C.

Images



Western Blotting

Image 1. TMEM16C antibody used at 1 ug/ml to detect target protein.