

Datasheet for ABIN635142

**anti-Synaptophysin antibody (N-Term)****2** Images[Go to Product page](#)

## Overview

Quantity:	100 µL
Target:	Synaptophysin (SYP)
Binding Specificity:	N-Term
Reactivity:	Human, Mouse, Rat
Host:	Rabbit
Clonality:	Polyclonal
Conjugate:	This Synaptophysin antibody is un-conjugated
Application:	Western Blotting (WB)

## Product Details

Immunogen:	Synaptophysin antibody was raised using the N terminal of SYP corresponding to a region with amino acids MLLLADMDVVNQLVAGGQFRVVKEPLGFVKVLQWVFAIFAFATCGSYSGE
Specificity:	Synaptophysin antibody was raised against the N terminal of SYP
Purification:	Affinity purified

## Target Details

Target:	Synaptophysin (SYP)
Alternative Name:	Synaptophysin ( <a href="#">SYP Products</a> )
Background:	Synaptophysin (p38) is an integral membrane protein of small synaptic vesicles in brain and endocrine cells.

## Target Details

---

Molecular Weight:	34 kDa (MW of target protein)
Pathways:	<a href="#">Regulation of G-Protein Coupled Receptor Protein Signaling</a> , <a href="#">Regulation of long-term Neuronal Synaptic Plasticity</a>

## Application Details

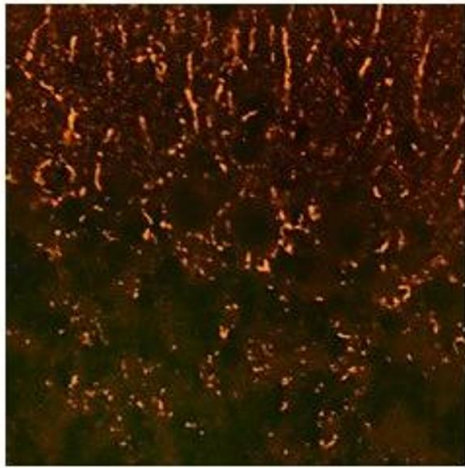
---

Application Notes:	WB: 1 µg/mL Optimal conditions should be determined by the investigator.
Comment:	Synaptophysin Blocking Peptide, catalog no. 33R-6191, is also available for use as a blocking control in assays to test for specificity of this Synaptophysin antibody
Restrictions:	For Research Use only

## Handling

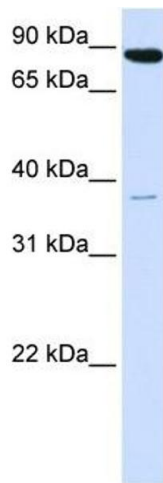
---

Format:	Lyophilized
Reconstitution:	Lyophilized powder. Add distilled water for a 1 mg/mL concentration of SYP antibody in PBS
Concentration:	Lot specific
Buffer:	PBS
Handling Advice:	Avoid repeated freeze/thaw cycles. Dilute only prior to immediate use.
Storage:	4 °C/-20 °C
Storage Comment:	Store at 2-8 °C for short periods. For longer periods of storage, store at -20 °C.



### Immunofluorescence

**Image 1.** Synaptophysin antibody used at a concentration of 10 ug/ml to detect synaptic puncta in rodent brain (red). Nuclei were stained with DAPI.



### Western Blotting

**Image 2.** Synaptophysin antibody used at 1 ug/ml to detect target protein.