

Datasheet for ABIN635143 **anti-Acsl3 antibody (N-Term)**



[Go to Product page](#)

1 Image

Overview

Quantity:	100 µL
Target:	Acsl3
Binding Specificity:	N-Term
Reactivity:	Human, Mouse
Host:	Rabbit
Clonality:	Polyclonal
Conjugate:	This Acsl3 antibody is un-conjugated
Application:	Western Blotting (WB)

Product Details

Immunogen:	ACSL3 antibody was raised using the N terminal of ACSL3 corresponding to a region with amino acids LDGLASVLYPGCDTLDKVFTYAKNKFKNKRLLGTTREVLNNEEDEVQPNGKI
Specificity:	ACSL3 antibody was raised against the N terminal of ACSL3
Purification:	Affinity purified

Target Details

Target:	Acsl3
Alternative Name:	ACSL3 (Acsl3 Products)
Background:	ACSL3 is an isozyme of the long-chain fatty-acid-coenzyme A ligase family. Although differing in substrate specificity, subcellular localization, and tissue distribution, all isozymes of this family convert free long-chain fatty acids into fatty acyl-CoA esters, and thereby play a key role

Target Details

in lipid biosynthesis and fatty acid degradation. This isozyme is highly expressed in brain, and preferentially utilizes myristate, arachidonate, and eicosapentaenoate as substrates.

Molecular Weight: 80 kDa (MW of target protein)

Pathways: [SARS-CoV-2 Protein Interactome](#)

Application Details

Application Notes: WB: 1 µg/mL
Optimal conditions should be determined by the investigator.

Comment: ACSL3 Blocking Peptide, catalog no. 33R-4845, is also available for use as a blocking control in assays to test for specificity of this ACSL3 antibody

Restrictions: For Research Use only

Handling

Format: Lyophilized

Reconstitution: Lyophilized powder. Add distilled water for a 1 mg/mL concentration of ACSL3 antibody in PBS

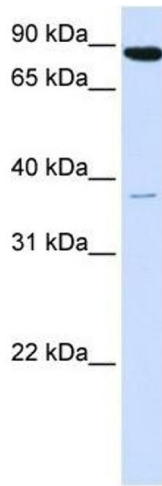
Concentration: Lot specific

Buffer: PBS

Handling Advice: Avoid repeated freeze/thaw cycles.
Dilute only prior to immediate use.

Storage: 4 °C/-20 °C

Storage Comment: Store at 2-8 °C for short periods. For longer periods of storage, store at -20 °C.



Western Blotting

Image 1. ACSL3 antibody used at 1 ug/ml to detect target protein.