

Datasheet for ABIN635156 **anti-CISD2 antibody (N-Term)**



[Go to Product page](#)

1 Image

Overview

Quantity:	100 µL
Target:	CISD2
Binding Specificity:	N-Term
Reactivity:	Human
Host:	Rabbit
Clonality:	Polyclonal
Conjugate:	This CISD2 antibody is un-conjugated
Application:	Western Blotting (WB)

Product Details

Immunogen:	CISD2 antibody was raised using the N terminal of CISD2 corresponding to a region with amino acids VLESVARIVKVQLPAYLKRLPVPESITGFARLTVSEWLRLLPFLGVLALL
Specificity:	CISD2 antibody was raised against the N terminal of CISD2
Purification:	Affinity purified

Target Details

Target:	CISD2
Alternative Name:	CISD2 (CISD2 Products)
Background:	CISD2 is a zinc finger protein that localizes to the endoplasmic reticulum. It binds an iron/sulfur cluster and may be involved in calcium homeostasis. Defects in this gene are a cause of Wolfram syndrome 2 (WFS2).

Target Details

Molecular Weight:	15 kDa (MW of target protein)
Pathways:	Activation of Innate immune Response

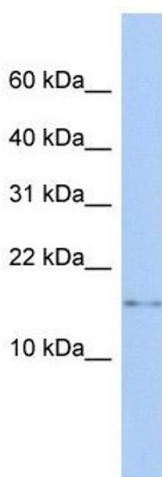
Application Details

Application Notes:	WB: 1 µg/mL Optimal conditions should be determined by the investigator.
Comment:	CISD2 Blocking Peptide, catalog no. 33R-9652, is also available for use as a blocking control in assays to test for specificity of this CISD2 antibody
Restrictions:	For Research Use only

Handling

Format:	Lyophilized
Reconstitution:	Lyophilized powder. Add distilled water for a 1 mg/mL concentration of CISD2 antibody in PBS
Concentration:	Lot specific
Buffer:	PBS
Handling Advice:	Avoid repeated freeze/thaw cycles. Dilute only prior to immediate use.
Storage:	4 °C/-20 °C
Storage Comment:	Store at 2-8 °C for short periods. For longer periods of storage, store at -20 °C.

Images



Western Blotting

Image 1. CISD2 antibody used at 1 µg/ml to detect target protein.