

## Datasheet for ABIN635157 **anti-PORCN antibody**



[Go to Product page](#)

### 1 Image

#### Overview

Quantity:	100 µL
Target:	PORCN
Reactivity:	Human, Mouse, Rat
Host:	Rabbit
Clonality:	Polyclonal
Conjugate:	This PORCN antibody is un-conjugated
Application:	Western Blotting (WB)

#### Product Details

Immunogen:	PORCN antibody was raised using a synthetic peptide corresponding to a region with amino acids ACRLWRLGLPSYLKHAHVAGGFFSLYHFFQLHMVWVLLSLLCYLVLF
Purification:	Affinity purified

#### Target Details

Target:	PORCN
Alternative Name:	PORCN ( <a href="#">PORCN Products</a> )
Background:	PORCN belongs to the evolutionarily conserved porcupine (Porc) gene family. Genes of the Porc family encode endoplasmic reticulum proteins with multiple transmembrane domains. Porcupine proteins are involved in the processing of Wnt (wingless and int homologue) proteins. Multiple alternatively spliced transcript variants encoding distinct isoforms have been observed.

## Target Details

---

Molecular Weight: 51 kDa (MW of target protein)

## Application Details

---

Application Notes: WB: 1 µg/mL  
Optimal conditions should be determined by the investigator.

Comment: PORCN Blocking Peptide, catalog no. 33R-1079, is also available for use as a blocking control in assays to test for specificity of this PORCN antibody

Restrictions: For Research Use only

## Handling

---

Format: Lyophilized

Reconstitution: Lyophilized powder. Add distilled water for a 1 mg/mL concentration of PORCN antibody in PBS

Concentration: Lot specific

Buffer: PBS

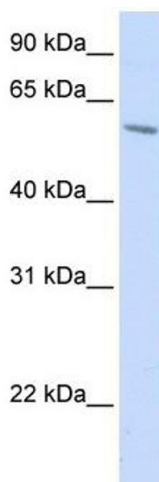
Handling Advice: Avoid repeated freeze/thaw cycles.

Storage: 4 °C/-20 °C

Storage Comment: Store at 2-8 °C for short periods. For longer periods of storage, store at -20 °C.

## Images

---



### Western Blotting

**Image 1.** PORCN antibody used at 1 ug/ml to detect target protein.