

Datasheet for ABIN635159

anti-Solute Carrier Organic Anion Transporter Family, Member 3A1 (SLC03A1) (Middle Region) antibody[Go to Product page](#)**1** Image

Overview

Quantity:	100 µL
Target:	Solute Carrier Organic Anion Transporter Family, Member 3A1 (SLC03A1)
Binding Specificity:	Middle Region
Reactivity:	Human, Mouse, Rat
Host:	Rabbit
Clonality:	Polyclonal
Conjugate:	Un-conjugated
Application:	Western Blotting (WB)

Product Details

Immunogen:	SLC03 A1 antibody was raised using the middle region of SLC03 1 corresponding to a region with amino acids MEIAVVAGFAAFLGKYLEQQFNLTSSANQLLGMTAIPCAACLGIFLGGLL
Specificity:	SLC03 A1 antibody was raised against the middle region of SLC03 1
Purification:	Affinity purified

Target Details

Target:	Solute Carrier Organic Anion Transporter Family, Member 3A1 (SLC03A1)
Alternative Name:	SLC03A1 (SLC03A1 Products)
Background:	SLC03A1 mediates the Na ⁺ -independent transport of organic anions such as estrone-3-sulfate. It mediates transport of prostaglandins (PG) E1 and E2, thyroxine (T4), deltorphin II, BQ-123 and vasopressin, but not DPDPE (a derivative of enkephalin lacking an N-terminal tyrosine residue),

Target Details

estrone-3-sulfate, taurocholate, digoxin nor DHEAS.

Molecular Weight: 76 kDa (MW of target protein)

Application Details

Application Notes: WB: 1 µg/mL
Optimal conditions should be determined by the investigator.

Comment: SLC03A1 Blocking Peptide, catalog no. 33R-5925, is also available for use as a blocking control in assays to test for specificity of this SLC03A1 antibody

Restrictions: For Research Use only

Handling

Format: Lyophilized

Reconstitution: Lyophilized powder. Add distilled water for a 1 mg/mL concentration of SLC00 1 antibody in PBS

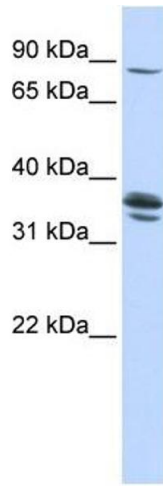
Concentration: Lot specific

Buffer: PBS

Handling Advice: Avoid repeated freeze/thaw cycles.
Dilute only prior to immediate use.

Storage: 4 °C/-20 °C

Storage Comment: Store at 2-8 °C for short periods. For longer periods of storage, store at -20 °C.



Western Blotting

Image 1. SLC03A1 antibody used at 1 ug/ml to detect target protein.