

Datasheet for ABIN635164  
**anti-SLC37A3 antibody**



[Go to Product page](#)

2 Images

## Overview

Quantity:	100 µL
Target:	SLC37A3
Reactivity:	Human
Host:	Rabbit
Clonality:	Polyclonal
Conjugate:	This SLC37A3 antibody is un-conjugated
Application:	Western Blotting (WB), Immunohistochemistry (IHC)

## Product Details

Immunogen:	SLC37 A3 antibody was raised using a synthetic peptide corresponding to a region with amino acids FFGLLVSP EEI GLSGIEAEENFEEDSHRPLINGGENEDEYEPNYSIQDDS
Purification:	Affinity purified

## Target Details

Target:	SLC37A3
Alternative Name:	SLC37A3 ( <a href="#">SLC37A3 Products</a> )
Background:	SLC17A3 may be involved in actively transporting phosphate into cells via Na(+) cotransport.
Molecular Weight:	54 kDa (MW of target protein)

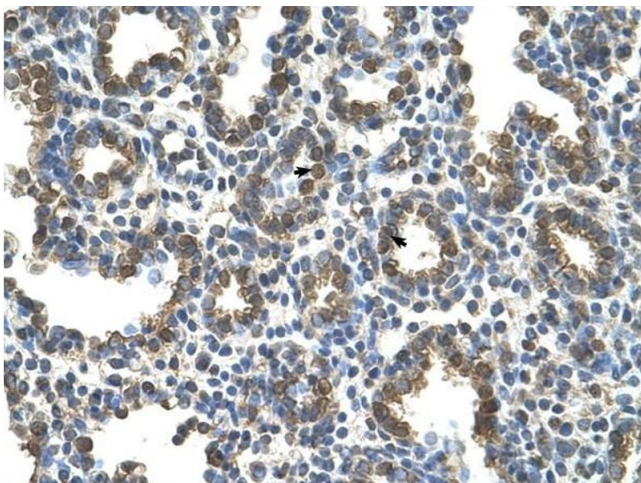
## Application Details

Application Notes:	WB: 0.25 µg/mL, IHC: 4-8 µg/mL Optimal conditions should be determined by the investigator.
Comment:	SLC37A3 Blocking Peptide, catalog no. 33R-2888, is also available for use as a blocking control in assays to test for specificity of this SLC37A3 antibody
Restrictions:	For Research Use only

## Handling

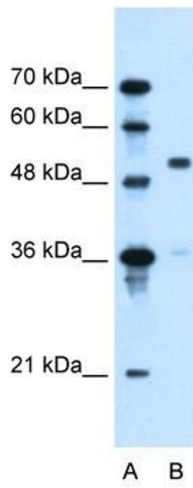
Format:	Lyophilized
Reconstitution:	Lyophilized powder. Add distilled water for a 1 mg/mL concentration of SLC30 3 antibody in PBS
Concentration:	Lot specific
Buffer:	PBS
Handling Advice:	Avoid repeated freeze/thaw cycles.
Storage:	4 °C/-20 °C
Storage Comment:	Store at 2-8 °C for short periods. For longer periods of storage, store at -20 °C.

## Images



### Immunohistochemistry

**Image 1.** SLC37A3 antibody was used for immunohistochemistry at a concentration of 4-8 µg/ml to stain Alveolar cells (arrows) in Human Lung. Magnification is at 400X



### Western Blotting

**Image 2.** SLC37A3 antibody used at 0.25 ug/ml to detect target protein.