

Datasheet for ABIN635179
anti-SLC3A1 antibody (N-Term)



[Go to Product page](#)

1 Image

Overview

Quantity:	100 µL
Target:	SLC3A1
Binding Specificity:	N-Term
Reactivity:	Human
Host:	Rabbit
Clonality:	Polyclonal
Conjugate:	This SLC3A1 antibody is un-conjugated
Application:	Western Blotting (WB)

Product Details

Immunogen:	SLC3 A1 antibody was raised using the N terminal of SLC3 1 corresponding to a region with amino acids DFREVDPIFGTMEDFENLVAAIHDKGLKLIIDFIPNHTSDKHIWFQLSRT
Specificity:	SLC3 A1 antibody was raised against the N terminal of SLC3 1
Purification:	Affinity purified

Target Details

Target:	SLC3A1
Alternative Name:	SLC3A1 (SLC3A1 Products)
Background:	This gene encodes a type II membrane glycoprotein which is one of the components of the renal amino acid transporter which transports neutral and basic amino acids in the renal tubule and intestinal tract.

Target Details

Molecular Weight: 79 kDa (MW of target protein)

Application Details

Application Notes: WB: 1 µg/mL
Optimal conditions should be determined by the investigator.

Comment: SLC3A1 Blocking Peptide, catalog no. 33R-1937, is also available for use as a blocking control in assays to test for specificity of this SLC3A1 antibody

Restrictions: For Research Use only

Handling

Format: Lyophilized

Reconstitution: Lyophilized powder. Add distilled water for a 1 mg/mL concentration of SLC0 1 antibody in PBS

Concentration: Lot specific

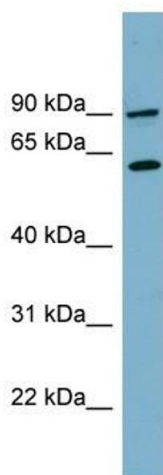
Buffer: PBS

Handling Advice: Avoid repeated freeze/thaw cycles.
Dilute only prior to immediate use.

Storage: 4 °C/-20 °C

Storage Comment: Store at 2-8 °C for short periods. For longer periods of storage, store at -20 °C.

Images



Western Blotting

Image 1. SLC3A1 antibody used at 1 ug/ml to detect target protein.