

Datasheet for ABIN635195 **anti-LPPR5 antibody (N-Term)**



[Go to Product page](#)

1 Image

Overview

Quantity:	100 µL
Target:	LPPR5
Binding Specificity:	N-Term
Reactivity:	Human, Mouse, Rat
Host:	Rabbit
Clonality:	Polyclonal
Conjugate:	This LPPR5 antibody is un-conjugated
Application:	Western Blotting (WB)

Product Details

Immunogen:	PAP2 D antibody was raised using the N terminal of PAP2 corresponding to a region with amino acids FTVNVQGFFCHDSAYRKPYGPEDESSAVPPVLLYSLAAGVPVLVIIVGET
Specificity:	PAP2 D antibody was raised against the N terminal of PAP2
Purification:	Affinity purified

Target Details

Target:	LPPR5
Alternative Name:	PAP2D (LPPR5 Products)
Background:	PAP2D is a type 2 member of the phosphatidic acid phosphatase (PAP) family. All type 2 members of this protein family contain 6 transmembrane regions, and a consensus N-glycosylation site. PAPs convert phosphatidic acid to diacylglycerol, and function in de novo

Target Details

synthesis of glycerolipids as well as in receptor-activated signal transduction mediated by phospholipase D. Alternate transcriptional splice variants, encoding different isoforms, have been characterized.

Molecular Weight: 35 kDa (MW of target protein)

Application Details

Application Notes: WB: 1 µg/mL
Optimal conditions should be determined by the investigator.

Comment: PAP2D Blocking Peptide, catalog no. 33R-3109, is also available for use as a blocking control in assays to test for specificity of this PAP2D antibody

Restrictions: For Research Use only

Handling

Format: Lyophilized

Reconstitution: Lyophilized powder. Add distilled water for a 1 mg/mL concentration of PAP0 antibody in PBS

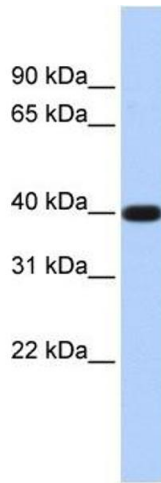
Concentration: Lot specific

Buffer: PBS

Handling Advice: Avoid repeated freeze/thaw cycles.
Dilute only prior to immediate use.

Storage: 4 °C/-20 °C

Storage Comment: Store at 2-8 °C for short periods. For longer periods of storage, store at -20 °C.



Western Blotting

Image 1. PAP2D antibody used at 1 ug/ml to detect target protein.