

Datasheet for ABIN635197  
**anti-KREMEN1 antibody (N-Term)**



[Go to Product page](#)

1 Image

## Overview

|                      |  |
|----------------------|--|
| Quantity:            | 100 µL                                 |
| Target:              | KREMEN1                                |
| Binding Specificity: | N-Term                                 |
| Reactivity:          | Human, Mouse, Rat                      |
| Host:                | Rabbit                                 |
| Clonality:           | Polyclonal                             |
| Conjugate:           | This KREMEN1 antibody is un-conjugated |
| Application:         | Western Blotting (WB)                  |

## Product Details

|               |   |
|---------------|---|
| Immunogen:    | KREMEN1 antibody was raised using the N terminal of KREMEN1 corresponding to a region with amino acids WKYCEIPACQMPGNLGCYKDHGNPPPLTGTSKTSNKLTIQTCISFCRSQR |
| Specificity:  | KREMEN1 antibody was raised against the N terminal of KREMEN1   |
| Purification: | Affinity purified   |

## Target Details

|                   |   |
|-------------------|---|
| Target:           | KREMEN1   |
| Alternative Name: | KREMEN1 ( <a href="#">KREMEN1 Products</a> )  |
| Background:       | KREMEN1 is a high-affinity dickkopf homolog 1 (DKK1) transmembrane receptor that functionally cooperates with DKK1 to block wingless (WNT)/beta-catenin signaling. It is a component of a membrane complex that modulates canonical WNT signaling through |

## Target Details

---

lipoprotein receptor-related protein 6 (LRP6). It contains extracellular krigle, WSC, and CUB domains.

Molecular Weight: 50 kDa (MW of target protein)

Pathways: [WNT Signaling](#)

## Application Details

---

Application Notes: WB: 1 µg/mL  
Optimal conditions should be determined by the investigator.

Comment: KREMEN1 Blocking Peptide, catalog no. 33R-9967, is also available for use as a blocking control in assays to test for specificity of this KREMEN1 antibody

Restrictions: For Research Use only

## Handling

---

Format: Lyophilized

Reconstitution: Lyophilized powder. Add distilled water for a 1 mg/mL concentration of KREMEN1 antibody in PBS

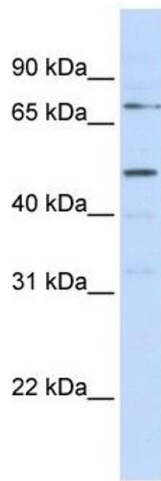
Concentration: Lot specific

Buffer: PBS

Handling Advice: Avoid repeated freeze/thaw cycles.  
Dilute only prior to immediate use.

Storage: 4 °C/-20 °C

Storage Comment: Store at 2-8 °C for short periods. For longer periods of storage, store at -20 °C.



### Western Blotting

**Image 1.** KREMEN1 antibody used at 1 ug/ml to detect target protein.