

Datasheet for ABIN635202 **anti-GCS1 antibody (N-Term)**



[Go to Product page](#)

1 Image

Overview

Quantity:	100 µL
Target:	GCS1 (MOGS)
Binding Specificity:	N-Term
Reactivity:	Human, Mouse
Host:	Rabbit
Clonality:	Polyclonal
Conjugate:	This GCS1 antibody is un-conjugated
Application:	Western Blotting (WB)

Product Details

Immunogen:	GCS1 antibody was raised using the N terminal of GCS1 corresponding to a region with amino acids GPYGWEFHDGLSFGRQHIQDGALRLTTEFVKRPGGQHGGDWSWRVTVEPQ
Specificity:	GCS1 antibody was raised against the N terminal of GCS1
Purification:	Affinity purified

Target Details

Target:	GCS1 (MOGS)
Alternative Name:	GCS1 (MOGS Products)
Background:	GCS1 is the first enzyme in the N-linked oligosaccharide processing pathway. The enzyme cleaves the distal alpha-1,2-linked glucose residue from the Glc(3)-Man(9)-GlcNAc(2) oligosaccharide precursor. This protein is located in the lumen of the endoplasmic reticulum.

Target Details

Molecular Weight:	92 kDa (MW of target protein)
Pathways:	SARS-CoV-2 Protein Interactome

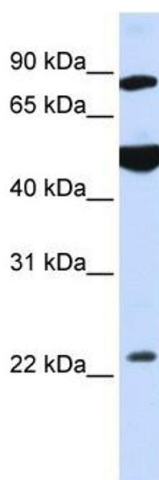
Application Details

Application Notes:	WB: 1 µg/mL Optimal conditions should be determined by the investigator.
Comment:	GCS1 Blocking Peptide, catalog no. 33R-3486, is also available for use as a blocking control in assays to test for specificity of this GCS1 antibody
Restrictions:	For Research Use only

Handling

Format:	Lyophilized
Reconstitution:	Lyophilized powder. Add distilled water for a 1 mg/mL concentration of GCS1 antibody in PBS
Concentration:	Lot specific
Buffer:	PBS
Handling Advice:	Avoid repeated freeze/thaw cycles. Dilute only prior to immediate use.
Storage:	4 °C/-20 °C
Storage Comment:	Store at 2-8 °C for short periods. For longer periods of storage, store at -20 °C.

Images



Western Blotting

Image 1. GCS1 antibody used at 1 ug/ml to detect target protein.