

Datasheet for ABIN635205 **anti-RHBDF1 antibody**



[Go to Product page](#)

1 Image

Overview

Quantity:	100 µL
Target:	RHBDF1
Reactivity:	Human, Mouse, Rat
Host:	Rabbit
Clonality:	Polyclonal
Conjugate:	This RHBDF1 antibody is un-conjugated
Application:	Western Blotting (WB)

Product Details

Immunogen:	RHBDF1 antibody was raised using a synthetic peptide corresponding to a region with amino acids KDWEKAPEQADLTGGALDRSELSHMLPLERGWWRKQKEGAAAPQPKVR
Purification:	Affinity purified

Target Details

Target:	RHBDF1
Alternative Name:	RHBDF1 (RHBDF1 Products)
Background:	RHBDF1 is a seven-transmembrane protein with a long N-terminal cytoplasmic extension that comprises half of the polypeptide sequence, and is found in the endoplasmic reticulum and Golgi, but not on the cell surface. RHBDF1 has a pivotal role in sustaining growth signals in epithelial cancer cells and thus may serve as a therapeutic target for treating epithelial cancers.
Molecular Weight:	97 kDa (MW of target protein)

Target Details

Pathways: [EGFR Signaling Pathway, Growth Factor Binding](#)

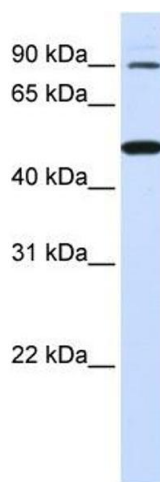
Application Details

Application Notes:	WB: 1 µg/mL Optimal conditions should be determined by the investigator.
Comment:	RHBDF1 Blocking Peptide, catalog no. 33R-4310, is also available for use as a blocking control in assays to test for specificity of this RHBDF1 antibody
Restrictions:	For Research Use only

Handling

Format:	Lyophilized
Reconstitution:	Lyophilized powder. Add distilled water for a 1 mg/mL concentration of RHBDF1 antibody in PBS
Concentration:	Lot specific
Buffer:	PBS
Handling Advice:	Avoid repeated freeze/thaw cycles.
Storage:	4 °C/-20 °C
Storage Comment:	Store at 2-8 °C for short periods. For longer periods of storage, store at -20 °C.

Images



Western Blotting

Image 1. RHBDF1 antibody used at 1 ug/ml to detect target protein.