

## Datasheet for ABIN635211 **anti-MPG antibody (C-Term)**



[Go to Product page](#)

### 1 Image

#### Overview

|                      |                                    |
|----------------------|------------------------------------|
| Quantity:            | 100 µL                             |
| Target:              | MPG                                |
| Binding Specificity: | C-Term                             |
| Reactivity:          | Human                              |
| Host:                | Rabbit                             |
| Clonality:           | Polyclonal                         |
| Conjugate:           | This MPG antibody is un-conjugated |
| Application:         | Western Blotting (WB)              |

#### Product Details

|               |  |
|---------------|--|
| Immunogen:    | MPG antibody was raised using the C terminal of MPG corresponding to a region with amino acids LEPSEPAVVAARVGVGHAGEWARKPLRFYVRGSPWVSVVDRVAEQDTQA |
| Specificity:  | MPG antibody was raised against the C terminal of MPG  |
| Purification: | Affinity purified  |

#### Target Details

|                   |  |
|-------------------|--|
| Target:           | MPG  |
| Alternative Name: | MPG ( <a href="#">MPG Products</a> )   |
| Background:       | MPG functions in the hydrolysis of the deoxyribose N-glycosidic bond to excise 3-methyladenine, and 7-methylguanine from the damaged DNA polymer formed by alkylation lesions. |

## Target Details

Molecular Weight: 32 kDa (MW of target protein)

Pathways: [DNA Damage Repair](#)

## Application Details

Application Notes: WB: 0.5 µg/mL  
Optimal conditions should be determined by the investigator.

Comment: MPG Blocking Peptide, catalog no. 33R-4919, is also available for use as a blocking control in assays to test for specificity of this MPG antibody

Restrictions: For Research Use only

## Handling

Format: Lyophilized

Reconstitution: Lyophilized powder. Add distilled water for a 1 mg/mL concentration of MPG antibody in PBS

Concentration: Lot specific

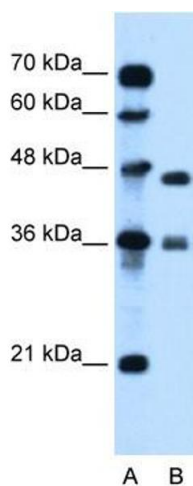
Buffer: PBS

Handling Advice: Avoid repeated freeze/thaw cycles.  
Dilute only prior to immediate use.

Storage: 4 °C/-20 °C

Storage Comment: Store at 2-8 °C for short periods. For longer periods of storage, store at -20 °C.

## Images



### Western Blotting

**Image 1.** MPG antibody used at 0.5 µg/ml to detect target protein.