

Datasheet for ABIN635223

anti-Fc epsilon RI/FCER1A antibody (N-Term)[Go to Product page](#)**1** Image

Overview

Quantity:	100 µL
Target:	Fc epsilon RI/FCER1A (FCER1A)
Binding Specificity:	N-Term
Reactivity:	Human
Host:	Rabbit
Clonality:	Polyclonal
Conjugate:	This Fc epsilon RI/FCER1A antibody is un-conjugated
Application:	Western Blotting (WB)

Product Details

Immunogen:	FCER1 A antibody was raised using the N terminal of FCER1 corresponding to a region with amino acids NPPWNRIFKGENVTLCNGNFFEVSSSTKWFHNGSLSEETNSSLNIVNAK
Specificity:	FCER1 A antibody was raised against the N terminal of FCER1
Purification:	Affinity purified

Target Details

Target:	Fc epsilon RI/FCER1A (FCER1A)
Alternative Name:	FCER1A (FCER1A Products)
Background:	The IgE receptor plays a central role in allergic disease, coupling allergen and mast cell to initiate the inflammatory and immediate hypersensitivity responses that are characteristic of disorders such as hay fever and asthma. The allergic response occurs when 2 or more high-

Target Details

affinity IgE receptors are crosslinked via IgE molecules that in turn are bound to an allergen (antigen) molecule.

Molecular Weight: 27 kDa (MW of target protein)

Pathways: [Fc-epsilon Receptor Signaling Pathway](#), [Regulation of Leukocyte Mediated Immunity](#), [Positive Regulation of Immune Effector Process](#)

Application Details

Application Notes: WB: 1 µg/mL
Optimal conditions should be determined by the investigator.

Comment: FCER1A Blocking Peptide, catalog no. ABIN5613559, is also available for use as a blocking control in assays to test for specificity of this FCER1A antibody

Restrictions: For Research Use only

Handling

Format: Lyophilized

Reconstitution: Lyophilized powder. Add distilled water for a 1 mg/mL concentration of FCER0 antibody in PBS

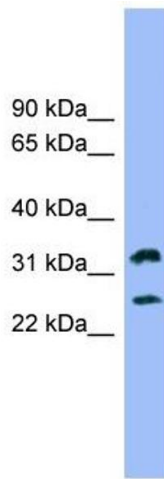
Concentration: Lot specific

Buffer: PBS

Handling Advice: Avoid repeated freeze/thaw cycles.
Dilute only prior to immediate use.

Storage: 4 °C/-20 °C

Storage Comment: Store at 2-8 °C for short periods. For longer periods of storage, store at -20 °C.



Western Blotting

Image 1. FCER1A antibody used at 1 ug/ml to detect target protein.