

Datasheet for ABIN635225
anti-SLC35D3 antibody (N-Term)



[Go to Product page](#)

1 Image

Overview

Quantity:	100 µL
Target:	SLC35D3
Binding Specificity:	N-Term
Reactivity:	Human, Mouse, Rat
Host:	Rabbit
Clonality:	Polyclonal
Conjugate:	This SLC35D3 antibody is un-conjugated
Application:	Western Blotting (WB)

Product Details

Immunogen:	SLC35 D3 antibody was raised using the N terminal of SLC35 3 corresponding to a region with amino acids RYQFSFLTIVQCLTSSTAALSLELLRRLGLIIVPPFGLSLARSFAGVAVL
Specificity:	SLC35 D3 antibody was raised against the N terminal of SLC35 3
Purification:	Affinity purified

Target Details

Target:	SLC35D3
Alternative Name:	SLC35D3 (SLC35D3 Products)
Background:	SLC35D3 may play a role in hemostasis as a regulator of the biosynthesis of platelet-dense granules.

Target Details

Molecular Weight: 44 kDa (MW of target protein)

Application Details

Application Notes: WB: 1 µg/mL
Optimal conditions should be determined by the investigator.

Comment: SLC35D3 Blocking Peptide, catalog no. 33R-8281, is also available for use as a blocking control in assays to test for specificity of this SLC35D3 antibody

Restrictions: For Research Use only

Handling

Format: Lyophilized

Reconstitution: Lyophilized powder. Add distilled water for a 1 mg/mL concentration of SLC30 3 antibody in PBS

Concentration: Lot specific

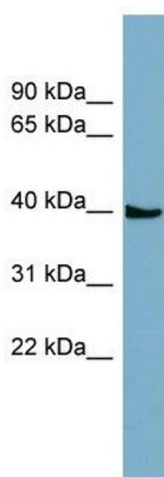
Buffer: PBS

Handling Advice: Avoid repeated freeze/thaw cycles.
Dilute only prior to immediate use.

Storage: 4 °C/-20 °C

Storage Comment: Store at 2-8 °C for short periods. For longer periods of storage, store at -20 °C.

Images



Western Blotting

Image 1. SLC35D3 antibody used at 1 ug/ml to detect target protein.