

Datasheet for ABIN635247
anti-C19orf46 antibody (N-Term)



[Go to Product page](#)

1 Image

Overview

Quantity:	100 µL
Target:	C19orf46
Binding Specificity:	N-Term
Reactivity:	Human
Host:	Rabbit
Clonality:	Polyclonal
Conjugate:	This C19orf46 antibody is un-conjugated
Application:	Western Blotting (WB)

Product Details

Immunogen:	C19 ORF46 antibody was raised using the N terminal Of C19 rf46 corresponding to a region with amino acids GEESTSPEQAQTLGQDSLGPPEHFQGGPRGNEPAAHPPRWSTPSSYEDPA
Specificity:	C19 ORF46 antibody was raised against the N terminal Of C19 rf46
Purification:	Affinity purified

Target Details

Target:	C19orf46
Alternative Name:	C19ORF46 (C19orf46 Products)
Background:	C19orf46 contributes to the establishment of secretory epithelial morphology by promoting kinesin-dependent apical migration of the centrosome and Golgi apparatus and basal localization of the nucleus.

Target Details

Molecular Weight: 43 kDa (MW of target protein)

Application Details

Application Notes: WB: 1 µg/mL
Optimal conditions should be determined by the investigator.

Comment: C19ORF46 Blocking Peptide, catalog no. 33R-3224, is also available for use as a blocking control in assays to test for specificity of this C19ORF46 antibody

Restrictions: For Research Use only

Handling

Format: Lyophilized

Reconstitution: Lyophilized powder. Add distilled water for a 1 mg/mL concentration of C10 RF46 antibody in PBS

Concentration: Lot specific

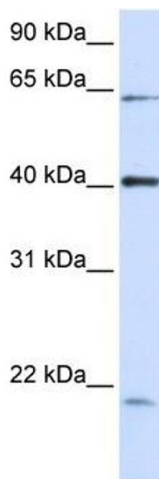
Buffer: PBS

Handling Advice: Avoid repeated freeze/thaw cycles.
Dilute only prior to immediate use.

Storage: 4 °C/-20 °C

Storage Comment: Store at 2-8 °C for short periods. For longer periods of storage, store at -20 °C.

Images



Western Blotting

Image 1. C19ORF46 antibody used at 1 ug/ml to detect target protein.