

Datasheet for ABIN635267

**anti-Solute Carrier Family 17 (Acidic Sugar Transporter),  
Member 5 (SLC17A5) antibody**[Go to Product page](#)**3** Images

## Overview

Quantity:	100 µL
Target:	Solute Carrier Family 17 (Acidic Sugar Transporter), Member 5 (SLC17A5)
Reactivity:	Human, Mouse, Rat
Host:	Rabbit
Clonality:	Polyclonal
Conjugate:	Un-conjugated
Application:	Western Blotting (WB), Immunohistochemistry (IHC)

## Product Details

Immunogen:	SLC17 A5 antibody was raised using a synthetic peptide corresponding to a region with amino acids LFTPIAADLGVGPLIVLRALEGLGEGVTFPAMHAMWSSWAPPLERSKLLS
Purification:	Affinity purified

## Target Details

Target:	Solute Carrier Family 17 (Acidic Sugar Transporter), Member 5 (SLC17A5)
Alternative Name:	SLC17A5 ( <a href="#">SLC17A5 Products</a> )
Background:	SLC17A5 is a membrane transporter that exports free sialic acids that have been cleaved off of cell surface lipids and proteins from lysosomes. Mutations in SLC17A5 gene cause sialic acid storage diseases, including infantile sialic acid storage disorder and Salla disease, an adult form.
Molecular Weight:	55 kDa (MW of target protein)

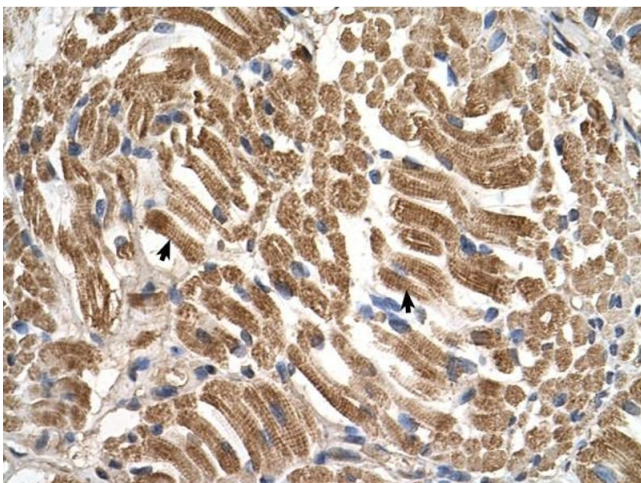
## Application Details

Application Notes:	WB: 0.5 µg/mL, IHC: 4-8 µg/mL Optimal conditions should be determined by the investigator.
Comment:	SLC17A5 Blocking Peptide, catalog no. 33R-4951, is also available for use as a blocking control in assays to test for specificity of this SLC17A5 antibody
Restrictions:	For Research Use only

## Handling

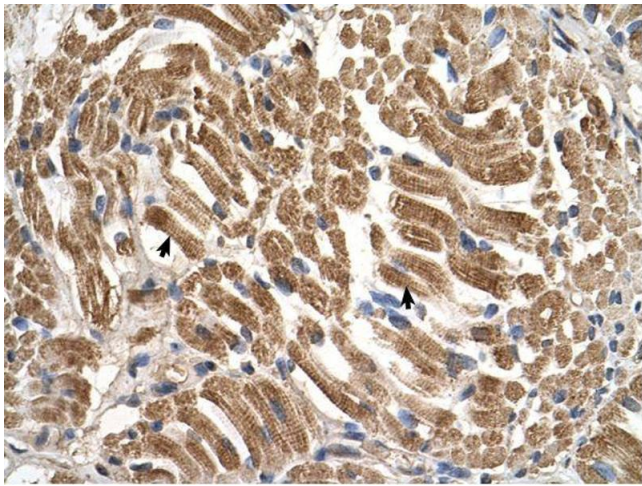
Format:	Lyophilized
Reconstitution:	Lyophilized powder. Add distilled water for a 1 mg/mL concentration of SLC10 5 antibody in PBS
Concentration:	Lot specific
Buffer:	PBS
Handling Advice:	Avoid repeated freeze/thaw cycles.
Storage:	4 °C/-20 °C
Storage Comment:	Store at 2-8 °C for short periods. For longer periods of storage, store at -20 °C.

## Images



### Immunohistochemistry

**Image 1.** SLC17A5 antibody was used for immunohistochemistry at a concentration of 4-8 µg/ml to stain skeletal muscle cells (arrows) in human muscle. Magnification is at 400X



### Immunohistochemistry

**Image 2.** SLC17A5 antibody was used for immunohistochemistry at a concentration of 4-8 ug/ml. Magnification is at 400X



### Western Blotting

**Image 3.** SLC17A5 antibody used at 0.5 ug/ml to detect target protein.