

Datasheet for ABIN635279

anti-Junctophilin 3 antibody (N-Term)**1** Image[Go to Product page](#)

Overview

Quantity:	100 µL
Target:	Junctophilin 3 (JPH3)
Binding Specificity:	N-Term
Reactivity:	Human, Mouse, Rat
Host:	Rabbit
Clonality:	Polyclonal
Conjugate:	This Junctophilin 3 antibody is un-conjugated
Application:	Western Blotting (WB)

Product Details

Immunogen:	Junctophilin 3 antibody was raised using the N terminal of JPH3 corresponding to a region with amino acids SSGGRFNFDDGGSYCGGWEDGKAHGHGVCTGPKGQGEYTGSWSHGFVGLG
Specificity:	Junctophilin 3 antibody was raised against the N terminal of JPH3
Purification:	Affinity purified

Target Details

Target:	Junctophilin 3 (JPH3)
Alternative Name:	Junctophilin 3 (JPH3 Products)
Background:	Junctional complexes between the plasma membrane and endoplasmic/sarcoplasmic reticulum are a common feature of all excitable cell types and mediate cross talk between cell surface and intracellular ion channels. JPH3 is a component of junctional complexes and is

Target Details

composed of a C-terminal hydrophobic segment spanning the endoplasmic/sarcoplasmic reticulum membrane and a remaining cytoplasmic domain that shows specific affinity for the plasma membrane. CAG/CTG repeat expansions at the Huntington's disease (HD)-like 2 locus have been identified in the gene that encodes JPH3 protein.

Molecular Weight: 81 kDa (MW of target protein)

Application Details

Application Notes: WB: 1 µg/mL
Optimal conditions should be determined by the investigator.

Comment: Junctophilin 3 Blocking Peptide, catalog no. 33R-8805, is also available for use as a blocking control in assays to test for specificity of this Junctophilin 3 antibody

Restrictions: For Research Use only

Handling

Format: Lyophilized

Reconstitution: Lyophilized powder. Add distilled water for a 1 mg/mL concentration of JPH3 antibody in PBS

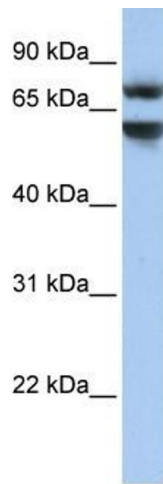
Concentration: Lot specific

Buffer: PBS

Handling Advice: Avoid repeated freeze/thaw cycles.
Dilute only prior to immediate use.

Storage: 4 °C/-20 °C

Storage Comment: Store at 2-8 °C for short periods. For longer periods of storage, store at -20 °C.



Western Blotting

Image 1. Junctophilin 3 antibody used at 1 ug/ml to detect target protein.