

Datasheet for ABIN635282 **anti-KTN1 antibody**



[Go to Product page](#)

1 Image

Overview

Quantity:	100 µL
Target:	KTN1
Reactivity:	Human, Mouse
Host:	Rabbit
Clonality:	Polyclonal
Conjugate:	This KTN1 antibody is un-conjugated
Application:	Western Blotting (WB)

Product Details

Immunogen:	Kinectin 1 antibody was raised using a synthetic peptide corresponding to a region with amino acids EELLKVISEREKEISGLWNELESLKDAVEHQKKNNDLREKNWEAMEALA
Purification:	Affinity purified

Target Details

Target:	KTN1
Alternative Name:	Kinectin 1 (KTN1 Products)
Background:	Various cellular organelles and vesicles are transported along the microtubules in the cytoplasm. Likewise, membrane recycling of the endoplasmic reticulum (ER), Golgi assembly at the microtubule organizing center, and alignment of lysosomes along microtubules are all related processes. The transport of organelles requires a special class of microtubule-associated proteins (MAPs). One of these is the molecular motor kinesin, an ATPase that

Target Details

moves vesicles unidirectionally toward the plus end of the microtubule.

Molecular Weight: 150 kDa (MW of target protein)

Application Details

Application Notes: WB: 1 µg/mL

Optimal conditions should be determined by the investigator.

Comment: Kinectin 1 Blocking Peptide, catalog no. 33R-2373, is also available for use as a blocking control in assays to test for specificity of this Kinectin 1 antibody

Restrictions: For Research Use only

Handling

Format: Lyophilized

Reconstitution: Lyophilized powder. Add distilled water for a 1 mg/mL concentration of KTN1 antibody in PBS

Concentration: Lot specific

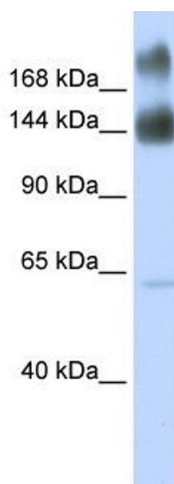
Buffer: PBS

Handling Advice: Avoid repeated freeze/thaw cycles.

Storage: 4 °C/-20 °C

Storage Comment: Store at 2-8 °C for short periods. For longer periods of storage, store at -20 °C.

Images



Western Blotting

Image 1. Kinectin 1 antibody used at 1 µg/ml to detect target protein.