

Datasheet for ABIN635286  
**anti-ERP29 antibody (N-Term)**



[Go to Product page](#)

1 Image

## Overview

Quantity:	100 µL
Target:	ERP29
Binding Specificity:	N-Term
Reactivity:	Human
Host:	Rabbit
Clonality:	Polyclonal
Conjugate:	This ERP29 antibody is un-conjugated
Application:	Western Blotting (WB)

## Product Details

Immunogen:	ERP29 antibody was raised using the N terminal of ERP29 corresponding to a region with amino acids MAAAVPRAAFLSPLLPLLLGFLLLSAPHGGSGSLHTKGALPLDVTYFYKVI
Specificity:	ERP29 antibody was raised against the N terminal of ERP29
Purification:	Affinity purified

## Target Details

Target:	ERP29
Alternative Name:	ERP29 ( <a href="#">ERP29 Products</a> )
Background:	This gene encodes a reticuloplasmin, a protein which resides in the lumen of the endoplasmic reticulum (ER). The protein shows sequence similarity to the protein disulfide isomerase family. However, it lacks the thioredoxin motif characteristic of this family, suggesting that this protein

## Target Details

does not function as a disulfide isomerase. The protein dimerizes and is thought to play a role in the processing of secretory proteins within the ER. Alternative splicing results in multiple transcript variants encoding different isoforms.

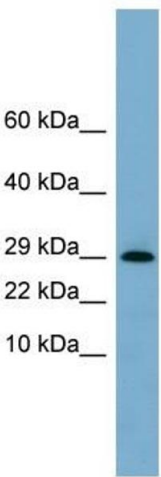
Molecular Weight: 26 kDa (MW of target protein)

## Application Details

Application Notes:	WB: 1 µg/mL Optimal conditions should be determined by the investigator.
Comment:	ERP29 Blocking Peptide, catalog no. 33R-5588, is also available for use as a blocking control in assays to test for specificity of this ERP29 antibody
Restrictions:	For Research Use only

## Handling

Format:	Lyophilized
Reconstitution:	Lyophilized powder. Add distilled water for a 1 mg/mL concentration of ERP29 antibody in PBS
Concentration:	Lot specific
Buffer:	PBS
Handling Advice:	Avoid repeated freeze/thaw cycles. Dilute only prior to immediate use.
Storage:	4 °C/-20 °C
Storage Comment:	Store at 2-8 °C for short periods. For longer periods of storage, store at -20 °C.



Western Blotting

**Image 1.** ERP29 antibody used at 1 ug/ml to detect target protein.