

Datasheet for ABIN635296

anti-SLC44A3 antibody (Middle Region)[Go to Product page](#)**1** Image

Overview

Quantity:	100 µL
Target:	SLC44A3
Binding Specificity:	Middle Region
Reactivity:	Human, Mouse, Rat
Host:	Rabbit
Clonality:	Polyclonal
Conjugate:	This SLC44A3 antibody is un-conjugated
Application:	Western Blotting (WB)

Product Details

Immunogen:	SLC44 A3 antibody was raised using the middle region of SLC44 3 corresponding to a region with amino acids TFAILIFFWVLWVAVLLSLGTAGAAQVMEGGQVEYKPLSGIRYMWSYHLI
Specificity:	SLC44 A3 antibody was raised against the middle region of SLC44 3
Purification:	Affinity purified

Target Details

Target:	SLC44A3
Alternative Name:	SLC44A3 (SLC44A3 Products)
Background:	SLC44A3 is a multi-pass membrane protein. It belongs to the CTL (choline transporter-like) family. The function of the RBM34 protein remains unknown.

Target Details

Molecular Weight: 68 kDa (MW of target protein)

Application Details

Application Notes: WB: 1 µg/mL
Optimal conditions should be determined by the investigator.

Comment: SLC44A3 Blocking Peptide, catalog no. 33R-9061, is also available for use as a blocking control in assays to test for specificity of this SLC44A3 antibody

Restrictions: For Research Use only

Handling

Format: Lyophilized

Reconstitution: Lyophilized powder. Add distilled water for a 1 mg/mL concentration of SLC40 3 antibody in PBS

Concentration: Lot specific

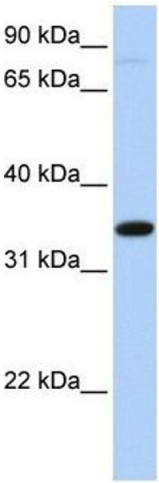
Buffer: PBS

Handling Advice: Avoid repeated freeze/thaw cycles.
Dilute only prior to immediate use.

Storage: 4 °C/-20 °C

Storage Comment: Store at 2-8 °C for short periods. For longer periods of storage, store at -20 °C.

Images



Western Blotting

Image 1. SLC44A3 antibody used at 1 ug/ml to detect target protein.